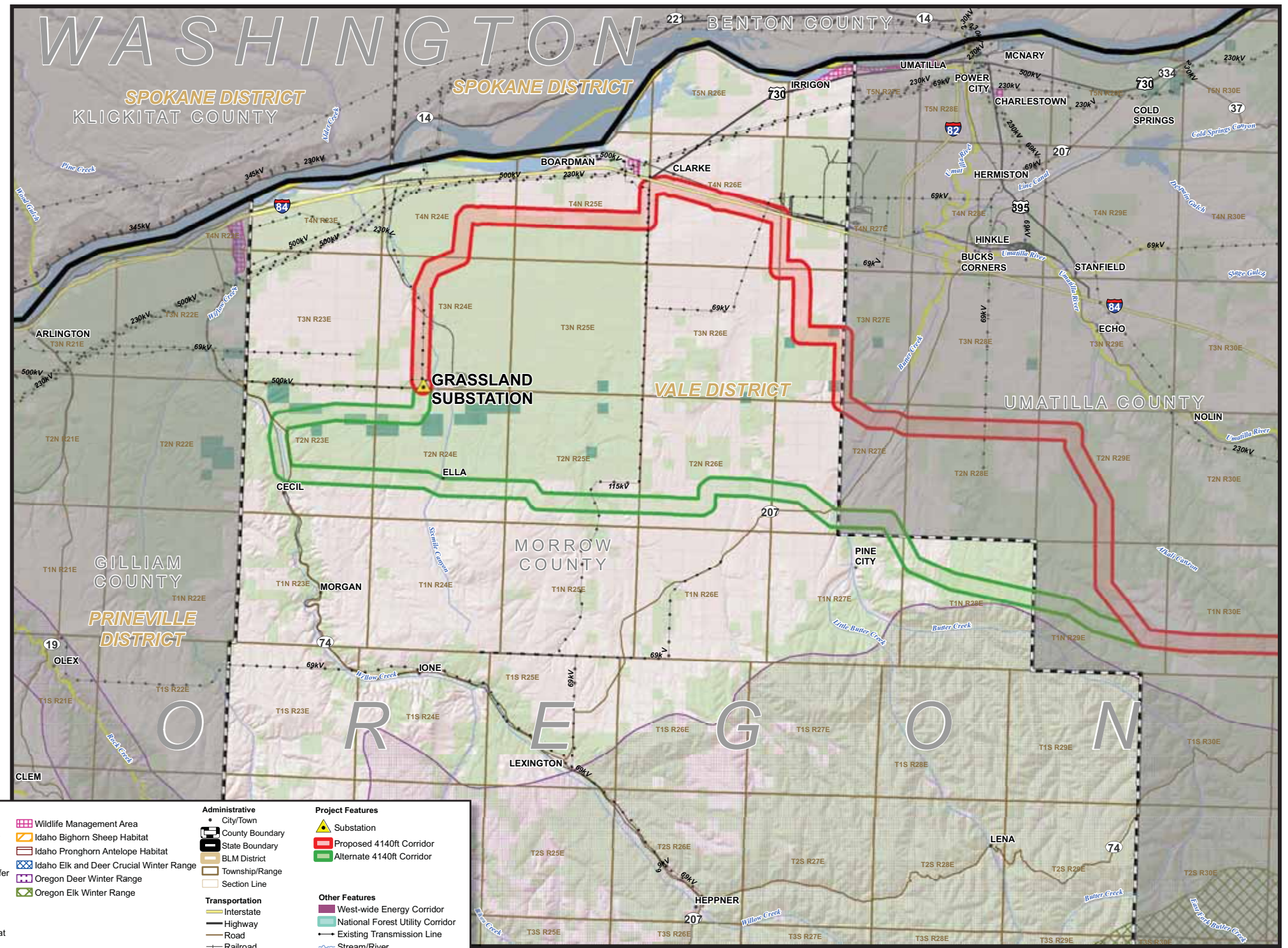


# Preliminary Biological Resources

- Wildlife and wildlife habitat
- Fish and fish habitat
- Plants
- Sensitive, threatened and endangered species
- Invasive and noxious species

Include in your comments any additional resources we should consider and, if possible, their location.



No warranty is made as to the accuracy, reliability, or completeness of these data for individual or aggregate use with other data. Original data were compiled from various sources. This information may not meet National Map Accuracy Standards. This product was developed through digital means and may be updated without notification.