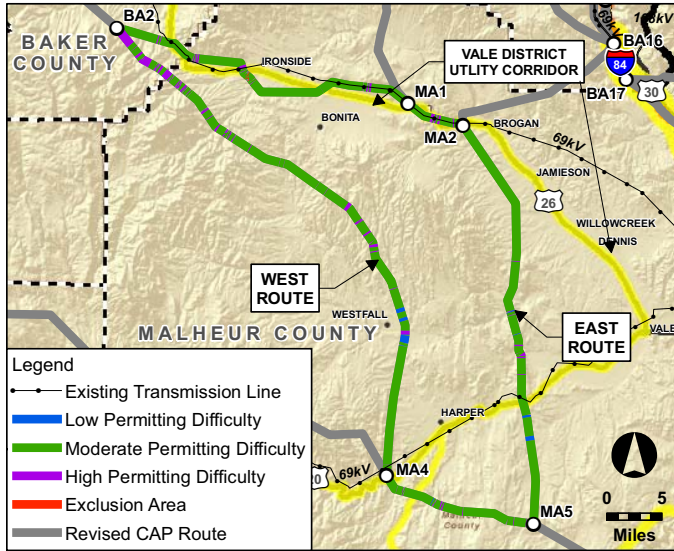
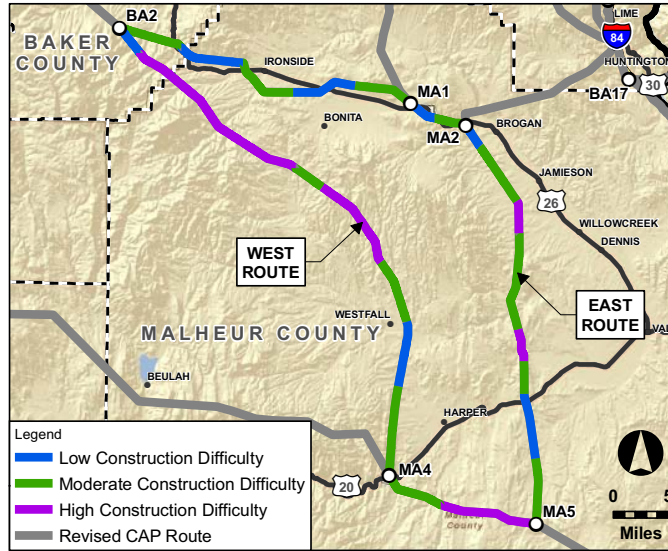


SOUTH PAT - WEST OF VALE

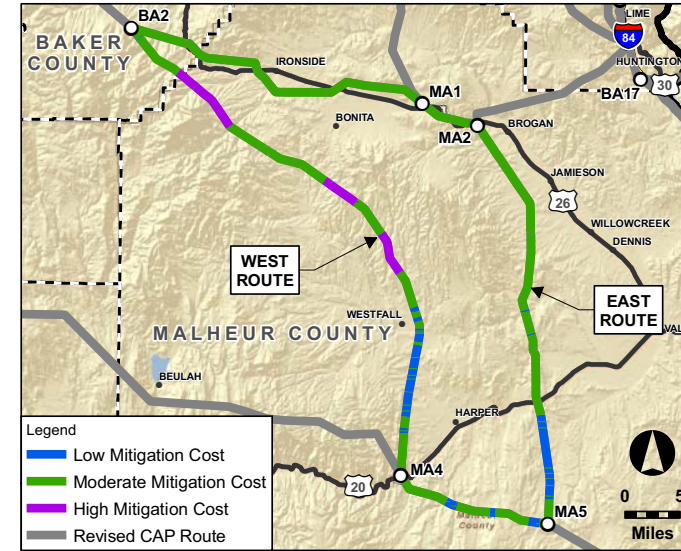
PERMITTING DIFFICULTY



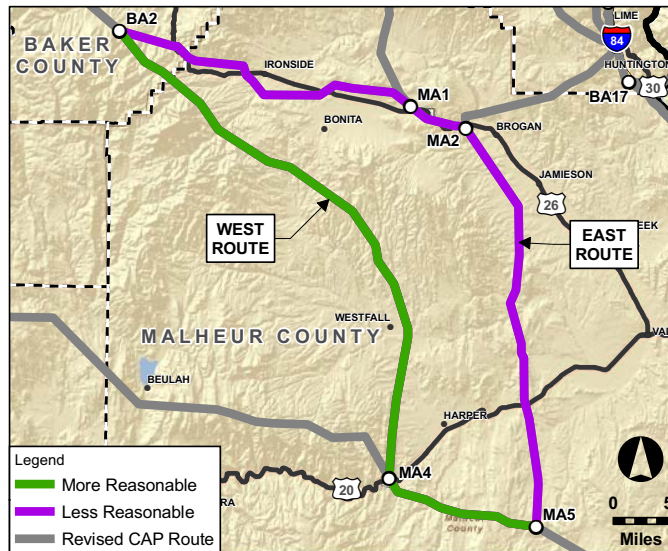
CONSTRUCTION DIFFICULTY



MITIGATION COST



SUMMARY



- 2 ROUTES WERE CONSIDERED:
WEST ROUTE (BA2-MA4-MA5) AND
EAST ROUTE (BA2-MA1-MA2-MA5)

- THE WEST ROUTE IS THE MORE
REASONABLE ROUTE

**- THE WEST ROUTE IS MORE REASONABLE
THAN THE EAST ROUTE BECAUSE IT:**

- 5.6 miles shorter/170 acres less ROW
- Crosses 12.4 fewer miles of Sage-grouse Core Area 1 Habitat
- Crosses 5.6 fewer miles of EFU
- Crosses 22 fewer miles of Private Land
- Crosses 3.4 fewer miles of Prime Farmland Soils
- Crosses 17.8 fewer miles of Deer Winter Range

WEST OF VALE MILEAGE SUMMARY

	WEST ROUTE (BA2-MA4-MA5)	EAST ROUTE (BA2-MA1-MA2-MA5)
	LENGTH IN MILES	
PERMITTING DIFFICULTY		
LOW	1.6	0.8
MODERATE	57.4	69.6
HIGH	8.8	3.0
EXCLUSION	0.0	0.0
CONSTRUCTION DIFFICULTY		
LOW	9.0	22.8
MODERATE	22.8	44.6
HIGH	36.0	6.0
MITIGATION COST		
LOW	11.8	8.0
MODERATE	41.8	65.4
HIGH	14.2	0.0

WEST OF VALE DATA TABLE

Resource Group	Regulatory Criteria Description	Permitting Difficulty	Community Criteria*	WEST ROUTE (BA2-MA4-MA5)	EAST ROUTE (BA2-MA1-MA2-MA5)	
				LENGTH IN MILES		
TOTAL LENGTH				67.8	73.4	
1	Visual Resources	National Forest Visual Quality Objective: Modification	Avoidance Mod	3.2	1.1	
2	Visual Resources	National Forest Visual Quality Objective: Partial Retention	Avoidance High	2.9	-	
3	Visual Resources	BLM Visual Resource Management Class 3 - OR	Avoidance Mod	1.2	3.4	
4	Visual Resources	BLM Visual Resource Management Class 4 - OR	Avoidance Low	35.2	21.4	
5	Fish and Wildlife	ODFW Conservation Opportunity Area	Avoidance Low	14.6	-	
6	Fish and Wildlife	ODFW Big Game Deer Winter Range	Avoidance Mod	CC	9.0	26.8
7	Fish and Wildlife	ODFW Big Game Elk Winter Range	Avoidance Mod	CC	36.3	34.2
8	Fish and Wildlife	Sage-grouse Core Area 1: Sagebrush Habitat (Oregon)	Avoidance Mod	23.3	35.7	
9	Fish and Wildlife	Sage-grouse Core Area 2: Potential Habitat (Oregon)	Avoidance Low	37.5	34.3	
10	Fish and Wildlife	Sage-grouse Core Area 3: Non-Sagebrush Shrublands and Grasslands (Oregon)	Avoidance Low	3.0	-	
11	Fish and Wildlife	Within 2-mile Oregon Sage-grouse Lek Buffer (Unoccupied)	Avoidance Low	14.2	-	
12	Fish and Wildlife	Wild Horse and Burro Area (OR BLM)	Avoidance Low	4.4	-	
13	Land Use	Cropland/Irrigated Agriculture	Avoidance High	0.5	0.3	
14	Land Use	Exclusive Farm Use Zone/Multiple Use Range Zone	Avoidance High	0.7	6.3	
15	Land Use	Grazing/Pasture - OR	Avoidance Low	61.1	48.9	
16	Land Use	Forested Land: Private	Avoidance Mod	2.1	0.3	
17	Land Use	Forested Land: Public	Avoidance Mod	1.6	-	
18	Land Use	Vale District Off-Highway Vehicle: Limited to Existing Routes	Avoidance Low	3.0	-	
19	Land Use	The Nature Conservancy: Portfolio	Avoidance Mod	22.2	0.9	
20	Land Use	Proposed Wilderness Study Area (ONDA)	Avoidance Mod	22.2	9.4	
21	Ownership	Bureau of Land Management	Avoidance Low	CC	36.4	24.8
22	Ownership	Bureau of Reclamation	Avoidance Low	CC	0.3	0.3
23	Ownership	Private	Avoidance Low	CC	25.6	47.6
24	Ownership	State Land	Avoidance Low	CC	1.7	-
25	Ownership	U.S. Forest Service	Avoidance Low	CC	4.0	0.8
26	Geological Resources	Erosion Hazard: Moderate (NRCS Soil Data - Grant Co, OR data n/a)	Avoidance Mod	0.1	2.6	
27	Geological Resources	Erosion Hazard: Low (NRCS Soil Data - Grant Co, OR data n/a)	Avoidance Low	0.3	3.0	
28	Geological Resources	Within 500ft of Fault Line	Avoidance Low	1.1	4.5	
29	Geological Resources	Prime Farmland/Arable Land: Soils Class 1-4	Avoidance Mod	CC	0.3	3.7
30	Geological Resources	Oregon Landslide Feature: Landslide	Avoidance Mod	-	0.6	
31	Slope	Slope 0-15%	Opportunity	39.1	54.1	
32	Slope	Slope 15-25%	Avoidance Low	16.7	12.7	
33	Slope	Slope 25-35%	Avoidance Mod	8.0	4.7	
34	Slope	Slope >35%	Avoidance High	4.1	1.9	
35	Water and Wetlands	National Wetland Inventory	Avoidance Mod	CC	0.1	0.5
36	Other Features	Vale District Utility Corridor	Opportunity	0.6	5.3	
37	Other Features	Parallel to Existing Transmission Line	Opportunity	-	16.4	

* Rows designated with "CC" indicate Community Criteria. These are the criteria the Project Advisory Teams wanted considered in the analysis.