

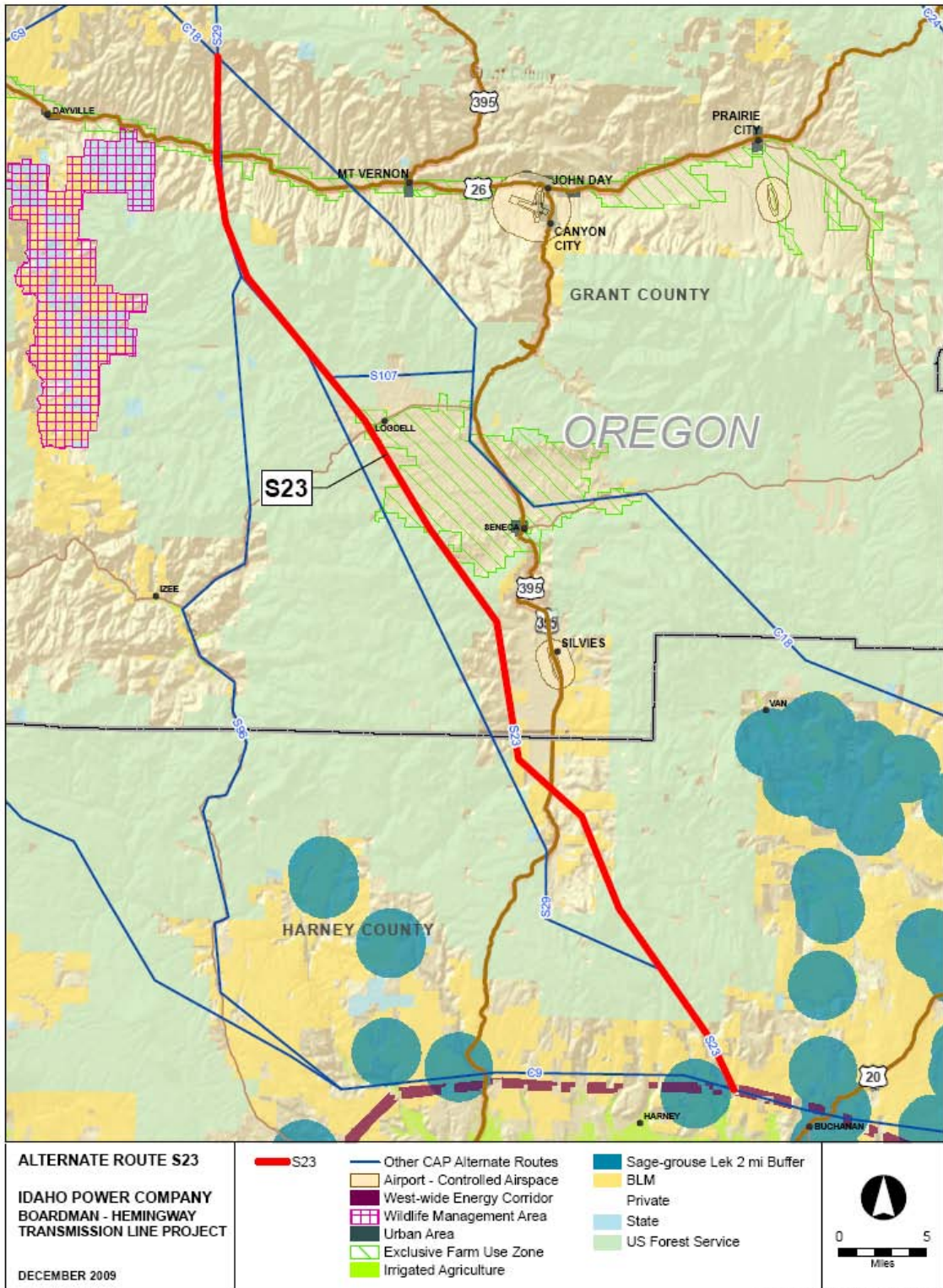
<p><b>ALTERNATE ROUTE S20</b></p> <p><b>IDAHO POWER COMPANY BOARDMAN - HEMINGWAY TRANSMISSION LINE PROJECT</b></p> <p>DECEMBER 2009</p>	<ul style="list-style-type: none"> <li><span style="color: red;">—</span> S20</li> <li><span style="color: blue;">—</span> Other CAP Alternate Routes</li> <li><span style="background-color: yellow; border: 1px solid black; display: inline-block; width: 10px; height: 10px;"></span> Airport - Controlled Airspace</li> <li><span style="background-color: purple; border: 1px solid black; display: inline-block; width: 10px; height: 10px;"></span> West-wide Energy Corridor</li> <li><span style="background-color: pink; border: 1px solid black; display: inline-block; width: 10px; height: 10px;"></span> Wildlife Management Area</li> <li><span style="background-color: black; border: 1px solid black; display: inline-block; width: 10px; height: 10px;"></span> Urban Area</li> <li><span style="background-color: lightgreen; border: 1px solid black; display: inline-block; width: 10px; height: 10px;"></span> Exclusive Farm Use Zone</li> <li><span style="background-color: limegreen; border: 1px solid black; display: inline-block; width: 10px; height: 10px;"></span> Irrigated Agriculture</li> </ul>	<ul style="list-style-type: none"> <li><span style="background-color: teal; border: 1px solid black; display: inline-block; width: 10px; height: 10px;"></span> Sage-grouse Lek 2 mi Buffer</li> <li><span style="background-color: yellow; border: 1px solid black; display: inline-block; width: 10px; height: 10px;"></span> BLM</li> <li><span style="background-color: lightblue; border: 1px solid black; display: inline-block; width: 10px; height: 10px;"></span> Private</li> <li><span style="background-color: lightblue; border: 1px solid black; display: inline-block; width: 10px; height: 10px;"></span> State</li> <li><span style="background-color: lightgreen; border: 1px solid black; display: inline-block; width: 10px; height: 10px;"></span> US Forest Service</li> </ul>	
---	--	--	--

MXD/CAP\_Process/Analysis of Original CAP Res

<b>BOARDMAN TO HEMINGWAY: S20</b>	
	<i>Total Miles:</i> 35.3
<b>Common Name</b>	<b>Miles</b>
<b>Cultural Resources</b>	
Within 1200ft Historic Trail	0.4
<b>Land Use</b>	
ODFW Conservation Opportunity Areas	2.0
Exclusive Farm Use & Irrigated Agriculture	0.1
Exclusive Farm Use & Class I & II Soils	0.1
Exclusive Farm Use	16.7
Forested Land	0.5
Grazing Allotment	30.3
Irrigated Agriculture	0.2
Vale District Off Highway Vehicle: Open	18.7
The Nature Conservancy: Portfolio	1.6
<b>Baker County, OR Zoning</b>	
Baker County: Exclusive Farm Use	16.7
Baker County: Mining Extraction	0.1
<b>Oregon Statewide Zoning</b>	
Oregon Statewide Zoning: Agriculture	16.7
Oregon Statewide Zoning: Agriculture (Range)	18.7
<b>Other Features</b>	
Within 200ft of Existing Pipeline	0.1
Vale District Utility Corridor	1.6
<b>Ownership</b>	
Bureau of Land Management	9.9
Private	25.4
<b>Geological Resources</b>	
Erosion Hazard: Low	12.9
Erosion Hazard: Moderate	3.3
Within 500ft of Fault Line	2.2
Prime Farmland (based on Soil Data)	11.5
Oregon Landslide Feature: Fan	0.5
Oregon Landslide Feature: Landslide	0.1
Arable Land: Soils Class II	0.1
Arable Land: Soils Class III	0.2
Arable Land: Soils Class IV	0.5
<b>Fish and Wildlife</b>	
Big Game Deer Winter Range (Oregon)	16.9
Big Game Elk Winter Range (Oregon)	30.6
Sage-grouse Core Area: NonHabitat/Other Vegetation (Oregon)	4.4
Sage-grouse Core Area: Potential Habitat (Oregon)	22.2
Sage-grouse Core Area: Sagebrush Habitat (Oregon)	8.7
Sage-grouse Occupied Habitat (Oregon)	17.4
<b>Visual Resources</b>	
Within 1200ft Scenic Byway	1.0
Visual Resource Management Class II (Baker County)	4.1



<b>BOARDMAN TO HEMINGWAY: S21</b>	
	<i>Total Miles:</i> 39.2
<b>Common Name</b>	<b>Miles</b>
<b>Land Use</b>	
ODFW Conservation Opportunity Areas	1.1
Exclusive Farm Use	10.7
Forested Land	1.1
Grazing Allotment	15.3
Irrigated Agriculture	1.4
National Forest Recreation Opportunity Spectrum: Roaded Natural	0.4
Vale District Off Highway Vehicle: Open	27.4
The Nature Conservancy: Portfolio	5.7
<b>Baker County, OR Zoning</b>	
Baker County: Exclusive Farm Use	10.7
Baker County: Primary Forest	0.4
Baker County: Timber Grazing	0.6
<b>Oregon Statewide Zoning</b>	
Oregon Statewide Zoning: Agriculture	10.7
Oregon Statewide Zoning: Agriculture (Range)	27.6
Oregon Statewide Zoning: Forest	0.9
<b>Other Features</b>	
Vale District Utility Corridor	3.6
<b>Ownership</b>	
Bureau of Land Management	0.8
Private	38.0
U.S. Forest Service	0.4
<b>Geological Resources</b>	
Erosion Hazard: High	0.2
Erosion Hazard: Low	5.4
Erosion Hazard: Moderate	4.9
Within 500ft of Fault Line	1.4
Prime Farmland (based on Soil Data)	8.6
Arable Land: Soils Class III	2.0
<b>Fish and Wildlife</b>	
Big Game Deer Winter Range (Oregon)	10.2
Big Game Elk Winter Range (Oregon)	28.4
Within 2-mile Sage-grouse Lek Buffer	7.6
Sage-grouse Core Area: NonHabitat/Other Vegetation (Oregon)	4.0
Sage-grouse Core Area: Potential Habitat (Oregon)	20.2
Sage-grouse Core Area: Sagebrush Habitat (Oregon)	14.9
Sage-grouse Occupied Habitat (Oregon)	22.3
<b>Visual Resources</b>	
Visual Quality Objective - Wallowa-Whitman NF: Partial Retention	0.0
Visual Quality Objective - Wallowa-Whitman NF: Retention	0.4



<b>BOARDMAN TO HEMINGWAY: S23</b>	
	<i>Total Miles:</i> 68.3
<b>Common Name</b>	<b>Miles</b>
<b>Land Use</b>	
ODFW Conservation Opportunity Areas	4.5
Exclusive Farm Use	6.5
Grazing Allotment	24.6
National Forest Old Growth Forest Stands	1.0
The Nature Conservancy: Portfolio	18.1
Proposed Wilderness Study Area	0.8
<b>Harney County, OR Zoning</b>	
Harney County: Farm & Ranch Use - 160 AC	14.7
Harney County: Forest Use	9.5
<b>Oregon Statewide Zoning</b>	
Oregon Statewide Zoning: Agriculture	6.5
Oregon Statewide Zoning: Agriculture (Range)	26.8
Oregon Statewide Zoning: Forest	35.0
<b>Other Features</b>	
West-wide Energy Corridor	0.1
<b>Ownership</b>	
Bureau of Land Management	7.6
Private	31.3
U.S. Forest Service	29.3
<b>Geological Resources</b>	
Erosion Hazard: Low	9.7
Erosion Hazard: Moderate	0.7
Within 500ft of Fault Line	2.2
Prime Farmland (based on Soil Data)	9.4
Oregon Landslide Feature: Fan	0.9
Oregon Landslide Feature: Landslide	5.0
Arable Land: Soils Class V	0.2
<b>Fish and Wildlife</b>	
Big Game Deer Winter Range (Oregon)	10.6
Big Game Elk Winter Range (Oregon)	20.9
Sage-grouse Occupied Habitat (Oregon)	14.0
Spring Chinook Streams	1 crossing
Summer Steelhead Streams	11 crossings
<b>Visual Resources</b>	
Within 1200ft Scenic Byway	0.5
Visual Quality Objective - Malheur NF: Partial Retention	2.9



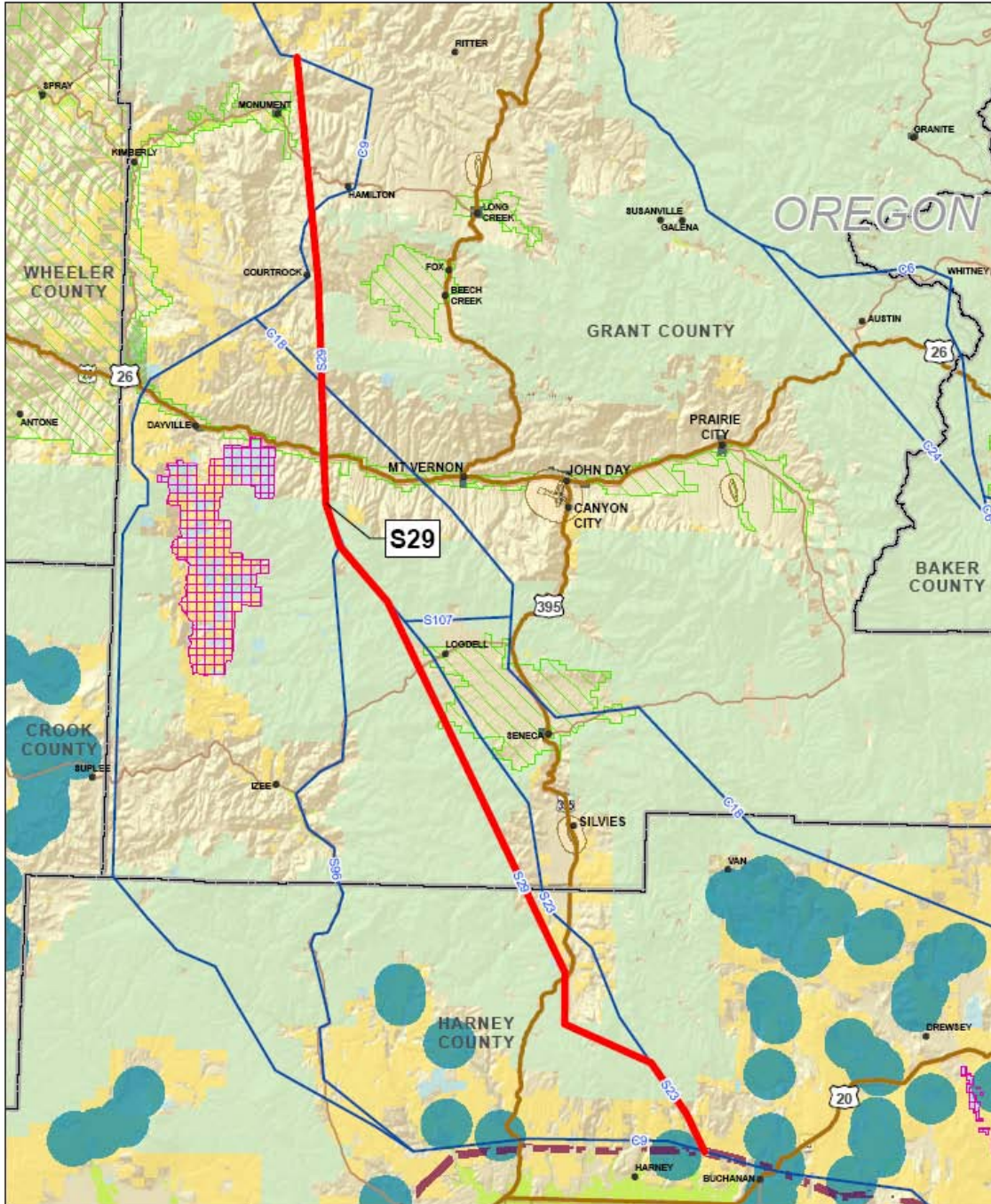
**ALTERNATE ROUTE S25**  
**IDAHO POWER COMPANY**  
**BOARDMAN - HEMINGWAY**  
**TRANSMISSION LINE PROJECT**  
 DECEMBER 2009

- S25
- Other CAP Alternate Routes
- Airport - Controlled Airspace
- West-wide Energy Corridor
- Wildlife Management Area
- Urban Area
- Exclusive Farm Use Zone
- Irrigated Agriculture
- Sage-grouse Lek 2 mi Buffer
- BLM
- Private
- State
- US Forest Service



MDC/CAP\_Process/Analysis of Original CAP Plans

<b>BOARDMAN TO HEMINGWAY: S25</b>	
	Total Miles: 417.0
<b>Common Name</b>	<b>Miles</b>
<b>Cultural Resources</b>	
Within 1200ft Historic Trail	3.0
<b>Land Use</b>	
Area of Critical Environmental Concern	12.3
Restricted Airspace	7.0
Naval Weapons System Training Facility	6.3
ODFW Conservation Opportunity Areas	26.3
Exclusive Farm Use & Irrigated Agriculture	49.2
Exclusive Farm Use & Class I & II Soils	25.0
Exclusive Farm Use	72.4
Grazing Allotment	62.7
Irrigated Agriculture	58.7
The Nature Conservancy: Portfolio	25.4
The Nature Conservancy: Preserve	3.1
Urban Growth Boundary - Oregon	1.3
Urban Area	4.5
<b>Morrow County, OR Zoning</b>	
Morrow County: Exclusive Farm Use	12.4
Morrow County: General Industrial	1.0
Morrow County: Public Use	6.3
<b>Oregon Statewide Zoning</b>	
Oregon Statewide Zoning: Agriculture	72.4
Oregon Statewide Zoning: Rural Industrial	3.7
Oregon Statewide Zoning: Rural Residential	0.3
Oregon Statewide Zoning: Urban	1.3
<b>Other Features</b>	
Within 200ft of Existing Pipeline	0.3
West-wide Energy Corridor	1.2
<b>Ownership</b>	
Bureau of Land Management	28.8
U.S. Forest Service - ID	78.2
Military Lands	6.4
Other Federal Lands	1.2
State Land	21.7
Private	64.6
<b>Geological Resources</b>	
Within 500ft of Fault Line	8.7
Idaho Landslide Susceptibility: High	1.7
Idaho Landslide Susceptibility: Low	182.7
Idaho Landslide Susceptibility: Moderate	2.3
Idaho Landslide Susceptibility: Sus-Mod	43.5
Oregon Landslide Feature: Fan	1.9
Arable Land: Soils Class I	3.4
Arable Land: Soils Class II	25.3
Arable Land: Soils Class III	13.8
Arable Land: Soils Class IV	18.0
Arable Land: Soils Class VI	11.2
<b>Fish and Wildlife</b>	
Big Game Crucial Winter Range (Idaho)	47.0
Big Game Deer Winter Range (Oregon)	2.1
Big Game Elk Winter Range (Oregon)	2.1
IDCDC At Risk Plants: General Location	18.8
IDCDC At Risk Plants: Higher Precision Location	8.1
IDCDC Special Status Fish Area	14.5
Pronghorn Habitat (Idaho)	5.2
Sage-grouse Core Area: NonHabitat/Other Vegetation (Oregon)	59.6
Sage-grouse Core Area: Potential Habitat (Oregon)	18.2
Sage-grouse Restoration Habitat Type 2: Annual Grass Understories (Idaho)	10.9
Spring Chinook Streams	4 crossings
Summer Chinook Streams	3 crossings
Summer Steelhead Streams	12 crossings
Bull Trout Streams	18 crossings
White Sturgeon Streams	1 crossing
<b>Visual Resources</b>	
Within 1200ft Scenic Byway	2.1
Visual Quality Objective - Malheur NF: Maximum Modification	5.6
Visual Quality Objective - Umatilla NF: Modification	8.7
Visual Quality Objective - Umatilla NF: Partial Retention	11.0
Visual Quality Objective - Umatilla NF: Preservation	5.0
Visual Quality Objective - Umatilla NF: Retention	2.5
Visual Resource Management Class IV (Four Rivers Field Office)	6.7
Visual Resource Management Class I	5.2
Visual Resource Management Class II	50.3
Visual Resource Management Class III	6.3
<b>Water and Wetlands</b>	
Snake River	0.1
Floodplain: 500-yr Flood Zone	0.1
Floodplain: Zone A	0.6
Floodplain: Zone ANI	6.4

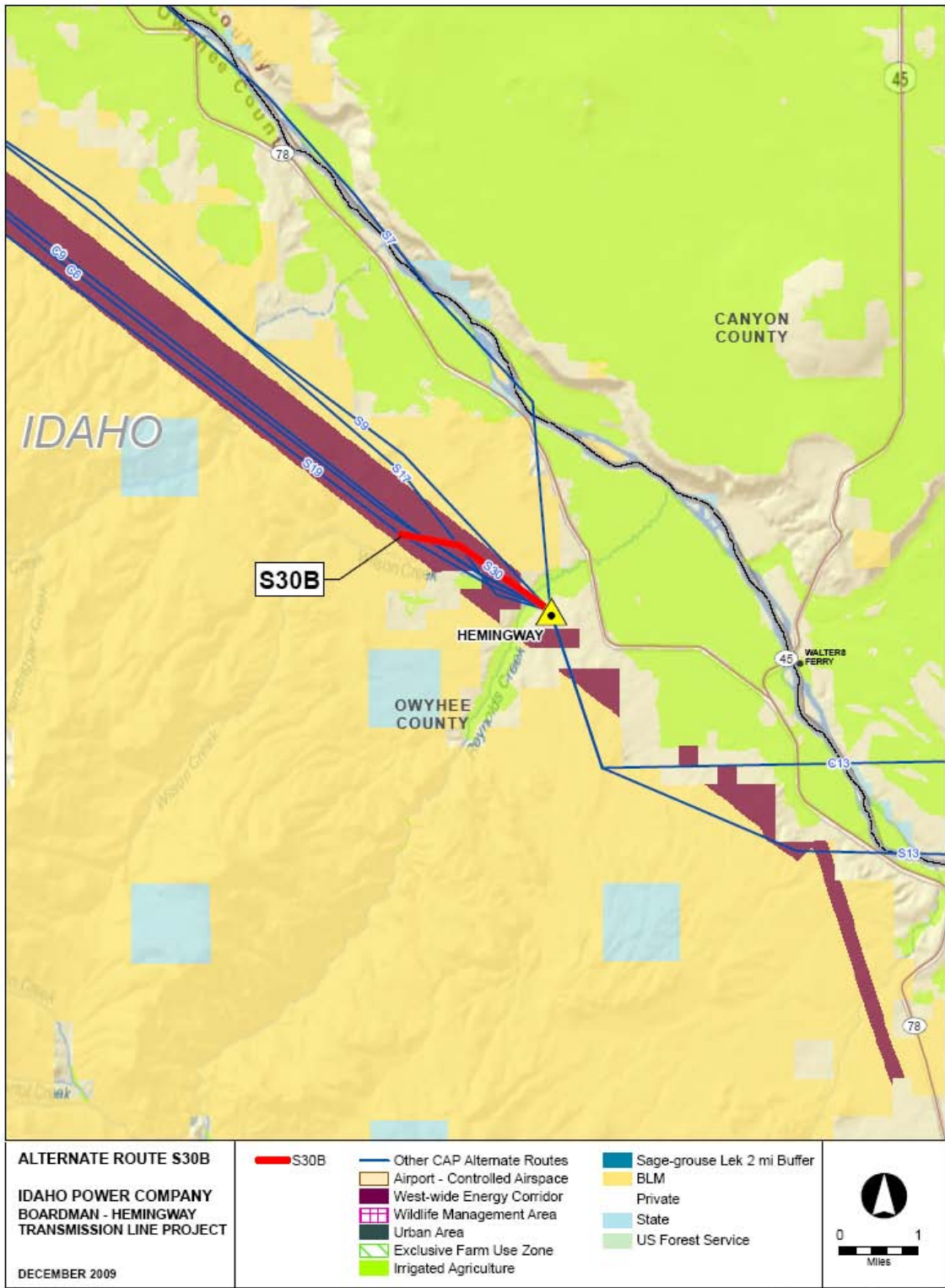


<p><b>ALTERNATE ROUTE S29</b></p> <p><b>IDAHO POWER COMPANY BOARDMAN - HEMINGWAY TRANSMISSION LINE PROJECT</b></p> <p>DECEMBER 2009</p>	<p><b>S29</b></p>	<p>Other CAP Alternate Routes</p> <p>Airport - Controlled Airspace</p> <p>West-wide Energy Corridor</p> <p>Wildlife Management Area</p> <p>Urban Area</p> <p>Exclusive Farm Use Zone</p> <p>Irrigated Agriculture</p>	<p>Sage-grouse Lek 2 mi Buffer</p> <p>BLM</p> <p>Private</p> <p>State</p> <p>US Forest Service</p>	
	<p style="text-align: right; font-size: small;">M:\IDCAP_Process\Analysis of Original CAP Rites</p>			

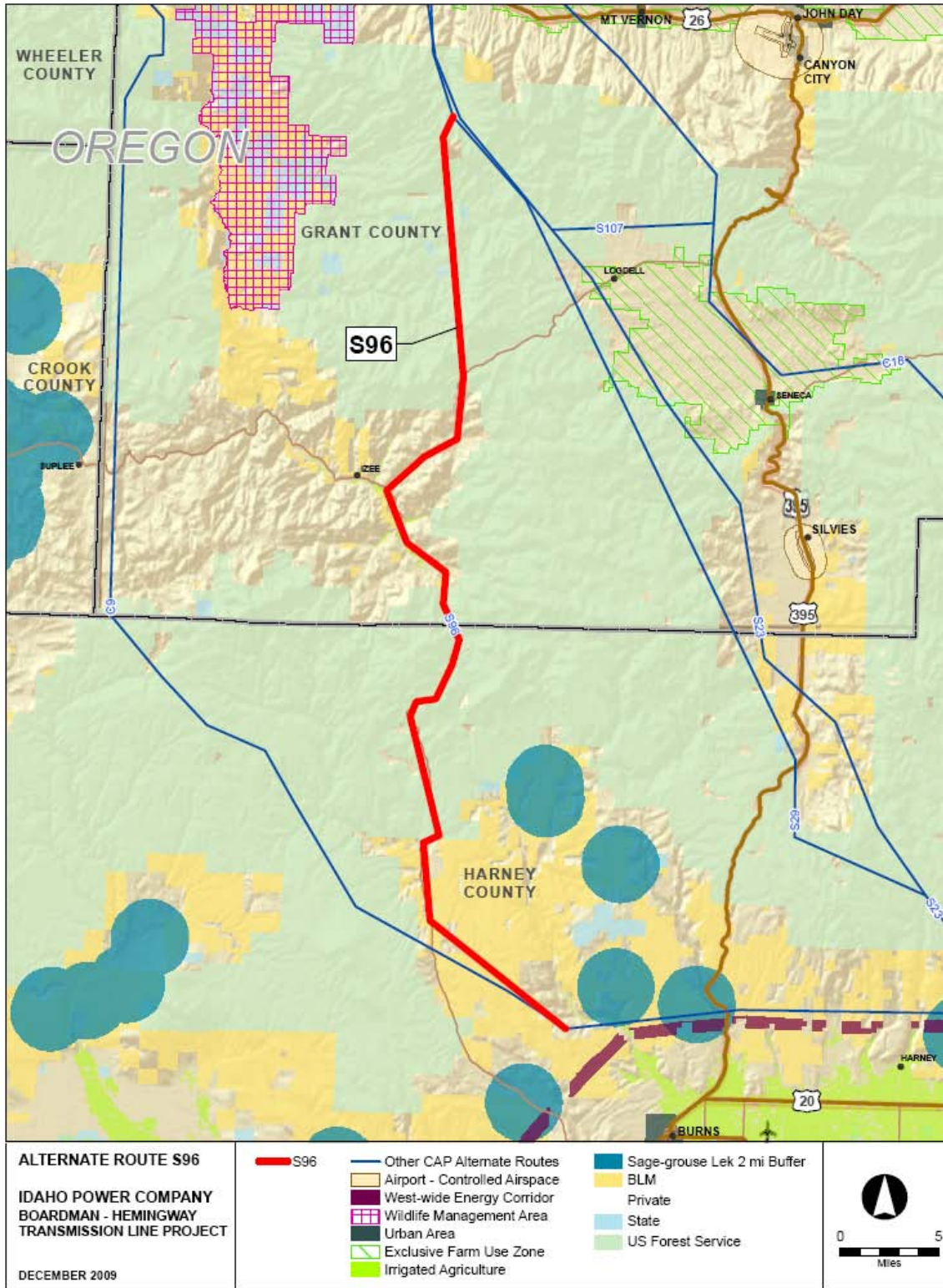
<b>BOARDMAN TO HEMINGWAY: S29</b>	
	<i>Total Miles:</i> 94.6
<b>Common Name</b>	<b>Miles</b>
<b>Land Use</b>	
ODFW Conservation Opportunity Areas	0.7
Exclusive Farm Use & Irrigated Agriculture	0.0
Exclusive Farm Use	1.2
Forested Land	51.1
Grazing Allotment	27.9
Irrigated Agriculture	0.1
National Forest Old Growth Forest Stands	5.3
The Nature Conservancy: Portfolio	27.2
Proposed Wilderness Study Area	1.3
<b>Harney County, OR Zoning</b>	
Harney County: Farm & Ranch Use - 160 AC	9.7
Harney County: Forest Use	16.8
<b>Oregon Statewide Zoning</b>	
Oregon Statewide Zoning: Agriculture	1.2
Oregon Statewide Zoning: Agriculture (Range)	35.5
Oregon Statewide Zoning: Forest	57.9
<b>Other Features</b>	
West-wide Energy Corridor	0.1
<b>Ownership</b>	
Bureau of Land Management	3.4
Private	40.1
State Land	0.9
U.S. Forest Service	50.1
<b>Geological Resources</b>	
Erosion Hazard: Low	5.9
Erosion Hazard: Moderate	1.2
Within 500ft of Fault Line	2.8
Prime Farmland (based on Soil Data)	7.3
Oregon Landslide Feature: Landslide	5.0
<b>Fish and Wildlife</b>	
Big Game Deer Winter Range (Oregon)	21.9
Big Game Elk Winter Range (Oregon)	37.3
Sage-grouse Occupied Habitat (Oregon)	3.8
Spring Chinook Streams	2 crossings
Summer Steelhead Streams	8 crossings
<b>Visual Resources</b>	
Within 1200ft Scenic Byway	0.5
Visual Quality Objective - Malheur NF: Partial Retention	6.7



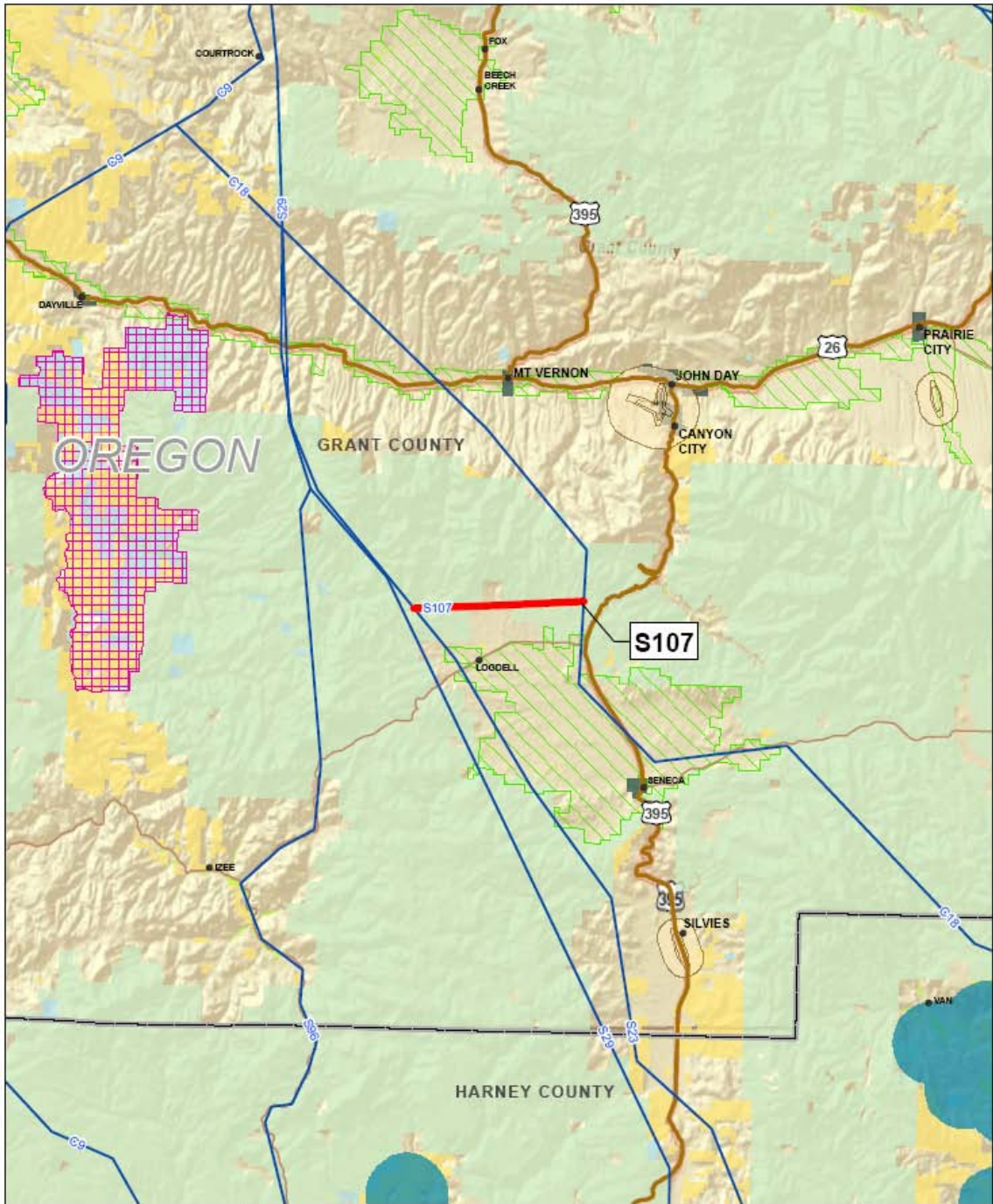
<b>BOARDMAN TO HEMINGWAY: S30A</b>	
	<i>Total Miles:</i> 3.8
<b>Common Name</b>	<b>Miles</b>
<b>Land Use</b>	
Grazing Allotment	3.8
The Nature Conservancy: Portfolio	3.3
<b>Ownership</b>	
Bureau of Land Management	3.0
State Land	0.8
<b>Geological Resources</b>	
Erosion Hazard: High	0.2
Erosion Hazard: Low	2.9
Erosion Hazard: Moderate	0.7
Within 500ft of Fault Line	1.0
Idaho Landslide Susceptibility: Low	3.8
<b>Fish and Wildlife</b>	
IDCDC At Risk Plants: Higher Precision Location	0.1
Pronghorn Habitat (Idaho)	3.8
<b>Visual Resources</b>	
Visual Resource Management Class III	3.1



<b>BOARDMAN TO HEMINGWAY: S30B</b>	
<i>Total Miles:</i> 2.2	
<b>Common Name</b>	<b>Miles</b>
<b>Land Use</b>	
Grazing Allotment	2.2
Irrigated Agriculture	0.1
<b>Other Features</b>	
West-wide Energy Corridor	1.7
<b>Ownership</b>	
Bureau of Land Management	1.7
<b>Geological Resources</b>	
Erosion Hazard: High	0.1
Erosion Hazard: Low	1.5
Erosion Hazard: Moderate	0.6
Within 500ft of Fault Line	0.2
Idaho Landslide Susceptibility: Low	2.2
Prime Farmland (based on Soil Data)	0.1
Arable Land: Soils Class IV	0.2
<b>Fish and Wildlife</b>	
IDCDC At Risk Plants: Higher Precision Location	0.3
Pronghorn Habitat (Idaho)	2.2



<b>BOARDMAN TO HEMINGWAY: S96</b>	
	<i>Total Miles:</i> 55.2
<b>Common Name</b>	<b>Miles</b>
<b>Land Use</b>	
ODFW Conservation Opportunity Areas	1.3
Forested Land	24.4
Grazing Allotment	23.8
Irrigated Agriculture	0.8
National Forest Old Growth Forest Stands	2.7
The Nature Conservancy: Portfolio	12.5
Proposed Wilderness Study Area	0.6
BLM Wild and Scenic River: Recreation	3.5
National Forest Wild and Scenic River: Recreation	3.3
<b>Harney County, OR Zoning</b>	
Harney County: Farm & Ranch Use - 160 AC	13.4
Harney County: Forest Use	12.5
<b>Oregon Statewide Zoning</b>	
Oregon Statewide Zoning: Agriculture (Range)	25.7
Oregon Statewide Zoning: Forest	29.5
<b>Ownership</b>	
Bureau of Land Management	7.2
Private	20.2
State Land	0.0
U.S. Forest Service	27.8
<b>Geological Resources</b>	
Erosion Hazard: Low	10.4
Erosion Hazard: Moderate	3.0
Within 500ft of Fault Line	1.7
Prime Farmland (based on Soil Data)	13.0
Oregon Landslide Feature: Landslide	4.6
Arable Land: Soils Class V	1.2
<b>Fish and Wildlife</b>	
Big Game Deer Winter Range (Oregon)	17.4
Big Game Elk Winter Range (Oregon)	34.7
Sage-grouse Occupied Habitat (Oregon)	3.2
Summer Steelhead Streams	1 crossing
<b>Visual Resources</b>	
Within 1200ft Scenic Byway	23.4
Visual Quality Objective - Malheur NF: Partial Retention	5.2



**ALTERNATE ROUTE S107**  
**IDAHO POWER COMPANY**  
**BOARDMAN - HEMINGWAY**  
**TRANSMISSION LINE PROJECT**

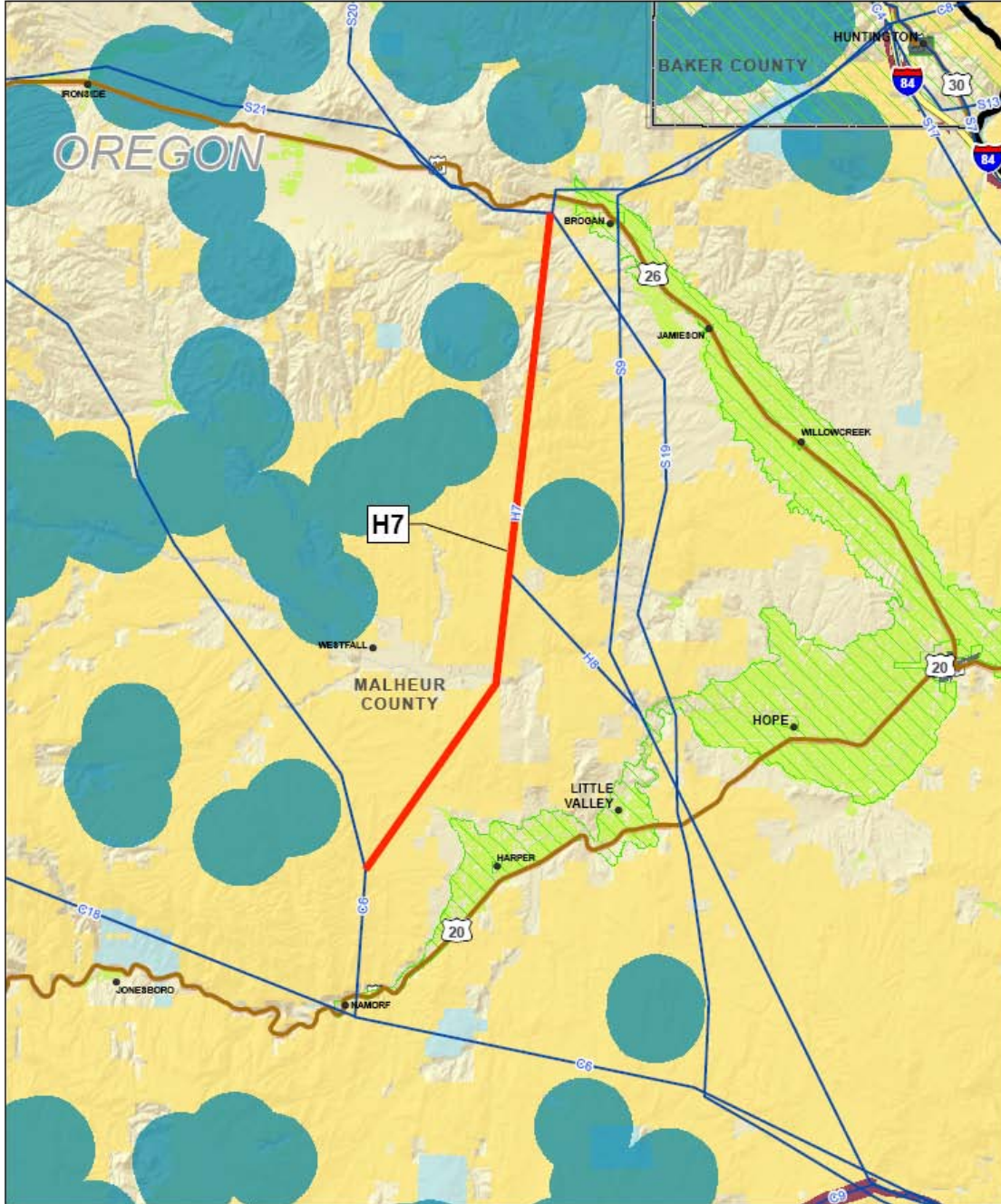
DECEMBER 2009

- S107
- Other CAP Alternate Routes
- Airport - Controlled Airspace
- West-wide Energy Corridor
- Wildlife Management Area
- Urban Area
- Exclusive Farm Use Zone
- Irrigated Agriculture
- Sage-grouse Lek 2 mi Buffer
- BLM
- Private
- State
- US Forest Service



MWD/CAP\_Process/Analysis of Original CAP Plans

<b>BOARDMAN TO HEMINGWAY: S107</b>	
	<i>Total Miles:</i> 8.3
<b>Common Name</b>	<b>Miles</b>
<b>Land Use</b>	
Forested Land	6.5
Irrigated Agriculture	0.1
<b>Oregon Statewide Zoning</b>	
Oregon Statewide Zoning: Forest	8.3
<b>Ownership</b>	
Private	1.5
U.S. Forest Service	6.8
<b>Geological Resources</b>	
Oregon Landslide Feature: Landslide	3.1
<b>Fish and Wildlife</b>	
Big Game Elk Winter Range (Oregon)	1.7
Sage-grouse Occupied Habitat (Oregon)	0.2
<b>Visual Resources</b>	
Visual Quality Objective - Malheur NF: Partial Retention	0.7



**ALTERNATE ROUTE H7**

**IDAHO POWER COMPANY  
BOARDMAN - HEMINGWAY  
TRANSMISSION LINE PROJECT**

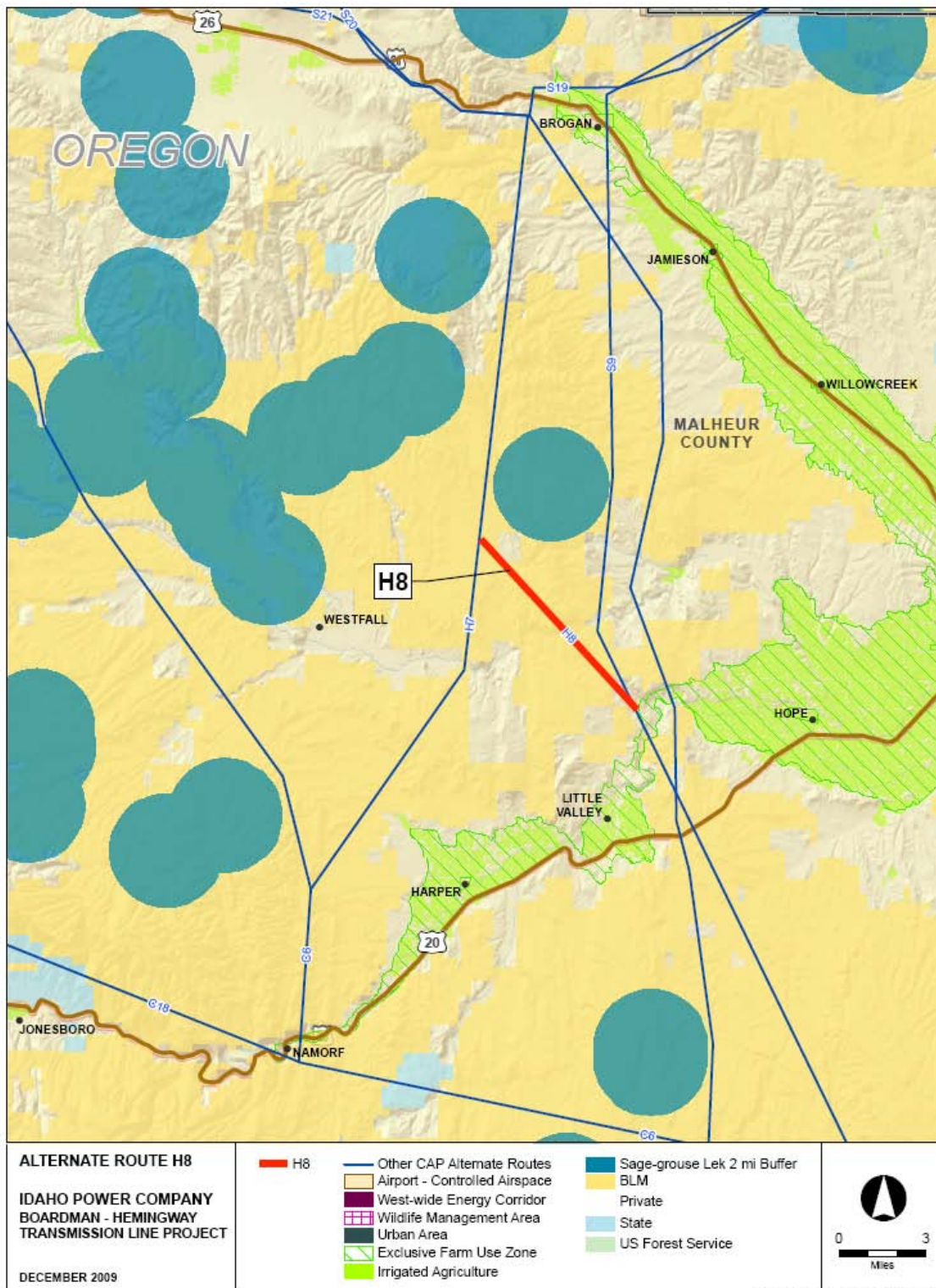
DECEMBER 2009

- H7
- Other CAP Alternate Routes
- Airport - Controlled Airspace
- West-wide Energy Corridor
- Wildlife Management Area
- Urban Area
- Exclusive Farm Use Zone
- Irrigated Agriculture
- Sage-grouse Lek 2 mi Buffer
- BLM
- Private
- State
- US Forest Service



M:\IDCAP\_Process\Analysis of Original CAP Res

<b>BOARDMAN TO HEMINGWAY: H7</b>	
	<i>Total Miles:</i> 28.6
<b>Common Name</b>	<b>Miles</b>
<b>Land Use</b>	
Grazing/Pasture - OR	26.5
Vale District Off Highway Vehicle: Limited to Existing Routes	2.6
The Nature Conservancy: Portfolio	1.7
Proposed Wilderness Study Area	5.2
<b>Oregon Statewide Zoning</b>	
Oregon Statewide Zoning: Agriculture (Range)	28.6
<b>Ownership</b>	
Bureau of Land Management	23.6
Private	5.0
<b>Geological Resources</b>	
Within 500ft of Fault Line	2.4
Oregon Landslide Feature: Landslide	0.1
<b>Fish and Wildlife</b>	
Big Game Deer Winter Range (Oregon)	1.7
Big Game Elk Winter Range (Oregon)	17.0
Sage-grouse Core Area: NonHabitat/Other Vegetation (Oregon)	2.1
Sage-grouse Core Area: Potential Habitat (Oregon)	19.7
Sage-grouse Core Area: Sagebrush Habitat (Oregon)	6.8
Sage-grouse Occupied Habitat (Oregon)	5.6
<b>Visual Resources</b>	
Visual Resource Management Class IV - OR	23.6



<b>BOARDMAN TO HEMINGWAY: H8</b>	
	<i>Total Miles: 8.0</i>
<b>Common Name</b>	<b>Miles</b>
<b>Land Use</b>	
Grazing/Pasture - OR	8.0
<b>Oregon Statewide Zoning</b>	
Oregon Statewide Zoning: Agriculture (Range)	8.0
<b>Ownership</b>	
Bureau of Land Management	6.8
Bureau of Reclamation	0.3
Private	0.9
<b>Geological Resources</b>	
Oregon Landslide Feature: Landslide	0.4
Within 500ft of Fault Line	1.8
<b>Fish and Wildlife</b>	
Big Game Deer Winter Range (Oregon)	0.3
Big Game Elk Winter Range (Oregon)	4.1
Sage-grouse Core Area: NonHabitat/Other Vegetation (Oregon)	0.7
Sage-grouse Core Area: Potential Habitat (Oregon)	4.6
Sage-grouse Core Area: Sagebrush Habitat (Oregon)	2.7
<b>Visual Resources</b>	
Visual Resource Management Class IV - OR	6.8