

Boardman to Hemingway Transmission Line Project

Harney County Project Advisory Team

Meeting #2 Summary

November 18, 2009

Harney County Community Center

484 N. Broadway Ave.

Burns, OR 97720

Table of Contents

Introduction	3
Harney County Project Advisory Team (PAT) Background.....	5
Harney Project Advisory Team Meeting #2 Overview	6
Presentations	8
Questions and Answers.....	14
Mapping Workshop Summary	19
Map of Harney County PAT Proposed Routes.....	21

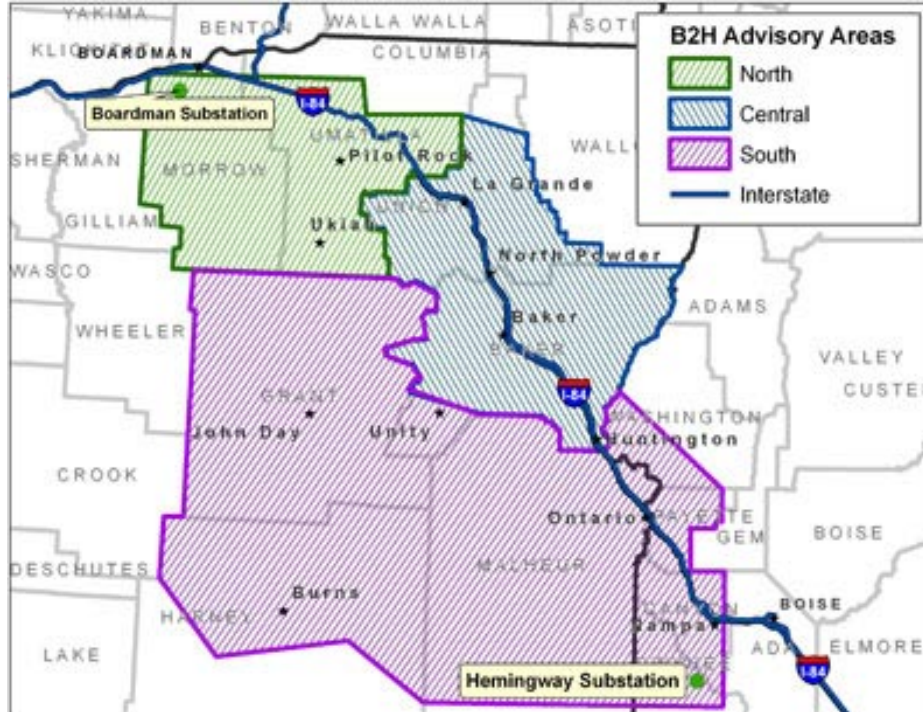
Introduction

Idaho Power is committed to partnering with communities to identify proposed and alternate routes for the Boardman to Hemingway Transmission Line Project. The initial process of identifying a route began in late 2007 when Idaho Power submitted documents to the Bureau of Land Management, U.S. Forest Service and Oregon Department of Energy–Energy Facility Siting Council. Following public scoping meetings held in October 2008, these agencies received public input requesting that Idaho Power conduct more extensive outreach while identifying the transmission line route.

In response, Idaho Power initiated a process to engage communities—from Boardman, Oregon to Melba, Idaho—in siting the Boardman to Hemingway Transmission Line Project. This process is called the Community Advisory Process (CAP). Idaho Power is conducting a comprehensive and inclusive public process to locate proposed and alternate routes for the Boardman to Hemingway Transmission Line Project.

The Project Advisory Teams will work closely with technical experts to recommend proposed and alternate routes.

As part of CAP, Project Advisory Teams (PATs) have been formed throughout the project area. Initially, one PAT was formed in the Central area, one in the North, and one in the South. Each PAT includes local officials, property owners and community representatives. The PATs are identifying community issues and concerns and working closely with technical experts to recommend proposed and alternate routes. *(Continued on next page)*



(Introduction continued) The Central, North and South PATs have met three times since Spring 2009. The third PAT meeting was a mapping workshop, in which PAT members identified potential routes for the transmission line. Idaho Power recorded these routes for evaluation.

Idaho Power invited community leaders from Grant and Harney counties to participate in the CAP in Spring 2009. Community leaders attended the North and South PAT meetings and stated that if these PATs ultimately recommended routes that affected their counties, then PATs should be formed in Grant and Harney counties.

At the Central, North and South mapping workshops in Fall 2009, PAT members asked Idaho Power to evaluate possible routes in Grant and Harney counties. As a result, Idaho Power asked communities in Grant and Harney counties to participate in the CAP.

Idaho Power hosted two public meetings in Grant and Harney counties in October 2009. The purpose of these public meetings was to give Grant and Harney counties the same opportunity as the Central, North and South advisory areas to learn about the project, see the routes proposed by the other PATs, and provide input on criteria for siting the transmission line.

Idaho Power used input from the public meetings and community leaders to form a Harney County Project Advisory Team and a Grant County Project Advisory Team. All teams will work closely with Idaho Power and technical experts to recommend proposed and alternate routes for the transmission line.

Harney County Project Advisory Team (PAT) Background

On Oct. 22 Public Meeting #1 was held in Burns, Oregon for Harney County residents. The purpose of the public meeting was to:

- Give the public an overview of the project.
- Allow the public to ask questions and provide input on criteria for siting the transmission line.
- Identify community members who wanted to join the Harney County Project Advisory Team.

The public meeting was conducted in an open house format. Attendees were given a meeting guide and comment sheet. Attendees were encouraged to view the nine display stations with information about the project. Idaho Power representatives were available to answer questions.

PAT Meeting #1

The first Harney County PAT meeting was held Nov. 4, 2009 in Burns, Oregon. The Harney County Project Advisory Team (PAT) includes community leaders, business owners, landowners, elected officials and residents in Harney County.

The purpose of the meeting was to:

- Review project background, status and the Community Advisory Process (CAP).
- Discuss purpose and need for the transmission project.
- Provide overview of Boardman to Hemingway permitting process.
- Give update on CAP work.
- Identify community concerns and suggestions.

Team members were presented the regulatory and engineering criteria that would be used when developing possible routes for the transmission line. These criteria include state and federal regulations, policies and other standards that are applicable to development of a route. The Bureau of Land Management (BLM), U.S. Forest Service (USFS) and Oregon Department of Energy-Energy Facility Siting Council (ODOE-EFSC) will use these criteria when reviewing proposed and alternate routes and determining whether they should authorize the project.

Community concerns and suggestions that were identified at the first PAT meeting were developed into community criteria. These community criteria will be used with the regulatory and engineering criteria to site potential routes for the proposed transmission line. These community criteria were presented to team members at the second PAT meeting for review and comment.

PAT Meeting #2

A full summary of the second Harney County PAT meeting is included in this document. A summary of the first Harney County PAT meeting is available on the project Web site www.boardmantohemingway.com.

Harney Project Advisory Team Meeting #2 Overview

The second Harney County PAT meeting was held Nov. 18, 2009 at the Harney County Community Center in Burns, OR.

The purpose of the meeting was to:

- Present the outcomes of the public meeting.
- Review and discuss draft community criteria.
- Review the regulatory and engineering criteria.
- Explain the mapping workshop.
- Begin to identify a range of possible routes for the Boardman to Hemingway Transmission Line.

Nine people attended the second Harney County PAT meeting. A complete list of invitees, attendees and the invitation e-mail are available in Appendix 1.

Meeting Format

Presentations

The second meeting began with presentations by Idaho Power and RBCI, the consulting firm that is managing public involvement activities for the Community Advisory Process. The presentations included:

- Welcome – Kent McCarthy, Idaho Power, Community Advisory Process Project Leader
- Team Business and Public Meeting Outcomes – Rosemary Curtin, RBCI
- Review of criteria and how routes will be analyzed – Kent McCarthy, Idaho Power, Community Advisory Process Project Leader
- Explanation of mapping workshop – Kent McCarthy, Idaho Power, Community Advisory Process Project Leader

A question-and-answer session was held after the presentations. These questions and answers have been recorded and can be found on Page 14 of this summary.

Mapping Workshop

The presentations were followed by a three-hour mapping workshop. The purpose of the mapping workshop was to:

- Begin to identify a range of possible routes for the Boardman to Hemingway Transmission Line.
- Collect input about routes proposed by the North, Central and South Project Advisory Teams.

Handouts

The following handouts were provided to team members. Copies of these handouts can be found in Appendix 2.

- Agenda for Harney County PAT #2
- PowerPoint presentations given by Idaho Power
- Harney County draft community criteria
- Harney County criteria analysis worksheet
- Community Criteria comment sheet
- Meeting Evaluation comment sheet
- Route Record Form comment sheet

Team Input

Comment sheets

Idaho Power provided team members three comment sheets. Transcriptions of these comment sheets are available in Appendix 3.

Route Record Form – Team members were asked to provide a written description and comments for each route they developed. They could also provide comments about other PAT proposed routes on this comment sheet.

- Four team members completed this comment sheet. Comments included:
 - Several of the routes developed by the South and Central PATs cross EFU land and sage grouse leks and do not meet the community criteria.
 - Routing through Harney County would be extremely expensive.
 - A benefit of the I-84 route is that it would have easier access for maintenance.

Meeting Evaluation comment sheet – Team members were asked what worked well and what didn't work well for the meeting.

- No team members completed this comment sheet.

Community Criteria comment sheet – Team members were asked if any of the draft community criteria needed to be changed or if additional community criteria needed to be added.

- No team members completed this comment sheet.

Harney PAT proposed routes

Two routes were developed by PAT members at the second Harney County PAT meeting. These routes were identified as H7 and H8. The following comments were submitted about these routes.

- **H7** – The C6 to S21 alternate route avoids EFU and leks, and moves back towards I-84. This line does not impact private lands as much as nearby alternatives.
- **H8** – S9 shortens the distance of H7 but crosses EFU where there isn't irrigated agriculture.

Presentations

Welcome and Introduction - Kent McCarthy, Idaho Power, CAP Project Leader

McCarthy welcomed PAT members, reviewed the meeting agenda and gave a brief review of the CAP process to date. McCarthy's presentation included the following information:

- The North, South and Central PATs developed the proposed transmission line routes that have been presented at the Harney PAT meetings.
- Baker and Malheur County residents asked Idaho Power to get input from Harney County residents on the proposed routes in Harney County. After routes were proposed in Harney County, Idaho Power set up PAT meetings in Harney County so they could meet with Harney County citizens.
- The CAP is in the early stages of the mapping process. The initial routes proposed by the North, South and Central PATs are not final. There will be more mapping workshops in the North, South, Central, Grant County and Harney County areas to refine the initial PAT-proposed routes.
- Routes are now being considered in Harney County because the Sand Hollow substation is no longer being built. The removal of the Sand Hollow substation allows more options for where the line can be sited. Idaho Power wants to hear the input from Harney County residents as they begin to analyze proposed routes.
- Idaho Power is committed to gathering input from all communities in the project area. A county with a larger population does not have more influence on the location of the transmission line than a county with a smaller population.
- Idaho Power is planning to ask Harney PAT members to work with citizens in Baker and Union counties in December or January to revise the range of proposed routes.

Overview of Public Meetings, Meeting Summaries and Community Criteria - Rosemary Curtin, RBCI, Facilitator

Curtin welcomed team members and reviewed the following information:

- Binders were handed out to team members at the first Harney PAT meeting on Nov. 4, 2009. If a team member has not received a binder, please contact Amanda Edge, Amanda@rbc.net, (208) 377-9688. Materials will be added to the binders as the CAP continues.
- A summary has been developed from the first Harney PAT meeting.
 - The summary was emailed to PAT members.
 - Anyone who didn't receive that email should request a copy from RBCI.
 - RBCI will mail a hard copy to those who do not have e-mail and to those who request a hard copy.
 - Important information in the summary is highlighted with a yellow border.

- Questions and answers from the Harney County PAT #1 meeting and the Grant County PAT #1 meeting were combined in one document in the appendices.
- Idaho Power wants to ensure PAT members are satisfied with the content of the summary before it is made public. PAT members should notify RBCI if they have comments or changes they would like made to the summary before it is posted on the Web site.
- Several PAT members indicated they had not received any communication from Idaho Power regarding the second PAT meeting. Idaho Power and RBCI will re-evaluate the notification process and will make sure that all parties receive an e-mail, U.S. Postal mail notification and/or phone call invitation for the next meeting.
- On Oct. 22, 2009 a public meeting was held at the Harney County Community Center in Burns, Oregon. Forty people attended this meeting and seven comment sheets were collected. On the comment sheets, public meeting attendees were asked to provide input on the following questions:
 - What are your concerns about siting the Boardman to Hemingway Transmission Line?
 - What are your suggestions for siting the transmission line?
 - Do you have any questions or comments about the routes proposed by the citizens in eastern Oregon and western Idaho?
 - Other comments.
- Public meeting attendees said they were concerned about the cost of construction and effects to the environment. Suggestions that were submitted on comment sheets included:
 - Site the transmission line where infrastructure already exists.
 - Keep the cost down.
 - Avoid undeveloped, pristine land.
- A summary of the public meeting will be posted on the project Web page www.boardmantohemingway.com.
- The first Harney County PAT meeting was held in Burns, Oregon on Nov. 4, 2009. PAT members were asked to give their concerns about the project and suggestions for where to site the routes for the transmission line. Responses from PAT members were consistent with the responses submitted at the public meeting.
- The most often-repeated concerns submitted by Harney County PAT members at the first meeting included:
 - A route through Harney County is not practical.
 - The benefits to Harney County are uncertain.
 - The transmission line will negative affect the environment.
- Suggestions from Harney County PAT members included:
 - Use existing corridors.
 - Follow the I-84 corridor

- Shadow an existing line
 - Site on public land
 - Avoid exclusive farmland
 - Site on private land
 - Consider wildlife areas
 - Use the most direct route from Boardman to Hemingway
 - Use Idaho Power's original route
- RBCI will develop a summary of the second Harney County PAT meeting, documenting all comments and routes. This summary will be distributed to PAT members and posted to www.boardmantohemingway.com by the end of December.

Criteria Overview and Route Analysis – Kent McCarthy

McCarthy reviewed the community, regulatory and engineering criteria that would be used to site potential routes for the transmission line. McCarthy's presentation included the following information:

- The terms avoidance and exclusion are both used in discussing criteria for the placement of transmission lines. A transmission line cannot be routed through an exclusion area because of regulatory criteria (i.e., a wilderness area or a sage grouse lek). Avoidance areas should be avoided if possible because of regulatory, environmental or community criteria. Many avoidance areas can be mitigated.
- Some examples of avoidance areas are:
 - Undeveloped areas
 - Wilderness areas
 - Rural areas
 - Roadless areas
 - Riparian areas, the strips of land that border creeks, rivers or other bodies of water
 - Scenic areas
 - The cedar grove
 - Fossil beds
 - View sheds
 - Recreation areas
 - Wildlife habitats
 - Big game winter range
 - Sage grouse leks
 - Forest land and old growth
 - Private property
 - Exclusive Farm Use (EFU) land
- The concerns and suggestions submitted by PAT members at the first PAT meeting have been developed into community criteria. These community criteria will be used with regulatory and engineering criteria when siting potential routes for the transmission line. Community criteria might not match up with federal and state criteria.

- Community criteria are divided into placement opportunities and avoidance areas. Placement opportunities for Harney County include:
 - Existing energy corridors (corridors that already have transmission lines on them)
 - I-84 corridor
 - Corridors near wind power generation
 - A direct route between Hemingway and Boardman
- The mapping sessions will be an iterative process. The PATs will use community, regulatory and engineering criteria to develop proposed routes. Idaho Power will analyze these routes and present this analysis back to the PATs at the next meeting. The goal of the PAT mapping workshops is to develop one proposed transmission line route and a range of reasonable alternatives.
- Harney County PAT members are welcome to develop new routes or comment on routes that the other PATs have proposed.
- Routing tools for team members include a routing criteria table; a regulatory framework table; and a summary of exclusion, avoidance and placement opportunities.
- Team members may choose to develop routes on the paper maps or work with GIS operators to plot routes at the computer stations. All PAT routes that have been developed to date have been done on the GIS system. No PAT members so far have used the paper maps.
- A set of hard copy reference maps are displayed on the walls. These maps are separated into different categories to make the routing constraints easier to see. The categories are:
 - Cultural and visual resources
 - Land use
 - Physical and natural resources
 - Fish and wildlife
 - Exclusion areas
 - General constraints
 - Topography
- Not all areas have been surveyed or mapped. While there is data for almost all the criteria that will be used to identify routes, there might be some constraints and opportunities that are not shown on any of the maps.
- The mapping data will continue to be updated throughout the process. While Idaho Power has been using a wide variety of sources to collect data, PAT members are encouraged to keep Idaho Power informed of any information missing from the maps.
- The data are from a variety of sources and there is varying quality assurance and quality control. The GIS data has not been validated. Idaho Power does not currently expect more data to come to light that will result in significant route changes in the future.
- Not all of the mapping data includes all of the routing criteria. For example:
 - In northern Morrow County, some information about transmission line voltages might be incorrect.

- Idaho Power does not have data on private resource lands, areas of tourism or rangelands.
 - The data is based on 2005 aerial photographs.
 - 2009 data has not yet been released.
 - Sage grouse data is expected to be updated by Oregon Department of Fish and Wildlife (ODFW).
 - Some data is incomplete, especially in rural areas.
 - GIS data has not been fully validated.
 - Not all the planning areas have been surveyed or mapped for all the routing criteria.
- Idaho Power relies on community members to help point out any inaccuracy in the data. Community members who know of a resource near their ranch or home that is not on a map should let Idaho Power know so they can correct the data.
 - Idaho Power will keep a detailed record of all routes developed by the PATs. Team members will be asked to provide a written description and comments for the routes they identify. This documentation will help Idaho Power understand the location and reasoning behind each route.
 - A Route Record Form (yellow form) will be provided to each PAT member. The Route Record Form will be used to:
 - Assign each route a number.
 - Make notes about proposed routes.
 - Provide a description of why the route was chosen.
 - Raise any questions or concerns about constraints or other items that are not displayed on the maps.
 - Provide contact information. Idaho Power may contact the developer of the route during the analysis to clarify information about the route.
 - PAT members should take the following factors into consideration when developing a route:
 - Cost (It will likely cost Idaho Power \$1 million to \$2 million to build the transmission line, so a proposed line that adds 100 miles to the route is likely too long).
 - Construction feasibility (i.e., a line that goes straight across the top of a mountain can't be built and some roadless areas might be inaccessible for construction and maintenance).
 - Must be able to be permitted (must meet regulatory criteria).
 - If a PAT member does not want to develop a route they may use the Route Record Form to comment on other PAT proposed routes.
 - Idaho Power will analyze all routes developed by the Project Advisory Teams using regulatory, engineering and community criteria. This analysis will include:

- Reviewing Route Record Forms in order to understand the purposes and concerns behind particular routes.
 - Combining routes if several similar proposed routes are submitted.
 - Categorizing routes according to ranked community criteria.
- The 44 routes developed by the North, South and Central PATs are currently being analyzed. These routes can be viewed on the GIS system.
- During analysis all routes will be categorized as having a low, moderate or high probability of being permitted. A table that quantifies opportunities and constraints of each route will also be developed. This information will be presented back to the PATs at the next set of meetings in December.
- It is not yet known how long it will take for Idaho Power to analyze the routes developed by the Harney County PAT. The analysis timeline depends on how many routes are developed.
- The routes that Idaho Power originally proposed are not available on a hard copy map or on the GIS system. Some of the routes proposed by the South and Central PATs are very similar to the routes originally proposed by Idaho Power.
- After the Harney County mapping session, PAT members will begin the process of revising and eliminating routes. Additional mapping sessions may be necessary.

Questions and Answers

After the presentations, team members were given the opportunity to ask questions. Idaho Power has added information to the answers in this summary in order to clarify a point or more accurately answer a question.

How many alternate routes does Idaho Power plan to submit?

There is no set number of alternatives. Idaho Power will gather all the alternatives that come out of the CAP. Through the NEPA process the BLM may develop alternatives. The range of routes can expand and contract at any time.

Why should we propose routes when Idaho Power already spent a lot of time and effort with expert teams developing their original route?

When Idaho Power developed the original route we did not have the local people sitting at the table with us. Idaho Power is committed to gathering input from the public.

Was there anything wrong with Idaho Power's original route, except for the fact that some people got angry because it went through farmland and sage grouse leks?

Through the CAP Idaho Power has received suggestions that might have made the original route easier to build. An example would be in Baker County. Baker County has offered suggestions of how to get around areas that were under contention. We recognize this is important information. Baker County has also been working with ODFW to allow us to get through some sage grouse leks that are not active. We have received very useful information during the CAP.

If the Harney County PAT tells Idaho Power "we don't want this line coming through Harney County," how long will you continue to involve us?

After the Harney County PAT has completed their mapping, ideally, Idaho Power would like members from this PAT to join the South PAT. The Harney County PAT and South PAT are concerned with most of the same routes. Ultimately, it depends on how many routes the Harney County PAT develops tonight.

The map shows other transmission lines crossing the Oregon Trail. At some point this transmission line will have to cross the Oregon Trail. Therefore, the Oregon Trail is not necessarily an exclusion area is it?

The BLM will allow the line to cross the Oregon Trail; however, it cannot run parallel to the Oregon Trail. On every map, except the map of exclusion areas, there are different levels of avoidance. You will have to ask the GIS operator and Tetra Tech (the mapping consultant) how high the level of avoidance is.

What level of avoidance are sage grouse leks?

Sage grouse leks are exclusion areas. There is a two-mile buffer around the leks. If sage grouse become a federally listed species, that buffer could increase. ODFW considers leks a Category 2 exclusion area. However, there is some controversy about that categorization because there are existing transmission lines across some leks.

Do you have data for both Grant and Harney counties?

Idaho Power has data for both counties. However, this data is not as complete as what we have gathered in Malheur, Baker, Union and counties in Idaho.

Do you want us to draw segments of routes or do you want a full route from Boardman to Hemingway?

You are welcome to draw either. For example, if you are interested in a route another PAT proposed that goes through Harney County, but you think a certain section is wrong, you can adjust just that section. Or you can develop a whole new route. You are welcome to develop as many routes as you like.

How many more mapping sessions will be held in Harney County?

It depends on what happens tonight. If the Harney County PAT develops many routes that need to be analyzed, Idaho Power will host another mapping session here. If all the routes developed tonight are in the Central and Southern project areas, we would invite you to come to the South and Central PAT meetings to help refine routes.

How long has Idaho Power been working on this project?

The project was proposed in 2007. In 2008, Idaho Power began the NEPA process. BLM held scoping meetings in October 2008 and we received a lot of public input that people were dissatisfied with our original route. Idaho Power took the original route off the map and initiated the Community Advisory Process.

Did the other communities develop routes in Harney County because there is a great deal of public land and a scarcity of population?

They wanted it off private land and off farmland.

There is a lot of National Forest land to the north of Harney County. How will Idaho Power deal with this?

The routes that go through Harney County go through National Forest land as soon as they leave Harney County. National Forest land is public land so will be analyzed using resource data similar to the analysis that takes place on BLM land.

Why would anyone who lives in Harney County want the transmission line to come through here?

A benefit to Harney County would be tax revenue. Idaho Power pays taxes on private lands.

Where is the line going to end up? Isn't it a waste of time if the Harney PAT says "Let's route it outside of Harney County and go home." How can we do something productive tonight to develop a route that works for everybody?

When Idaho Power developed the original route, it followed the I-84 corridor and used the corridor through the National Forest. Some of the South and Central PAT proposed routes parallel the original route but with some modifications. However, not everybody on those teams developed routes in that direction. If you have a route through Harney County that is different from what the other teams have done, Idaho Power would like to have that on record.

So the goal tonight is to work with the routes in Harney County to make the best option?

The goal of tonight is to get input about the PAT routes from Harney County citizens and give Harney County citizens the opportunity to develop routes.

We identified placement opportunities in our community criteria and recognized the I-84 corridor was the most direct route. Can we agree to use the criteria that we said was acceptable and also use Idaho Power's original route? We could modify the original route knowing that the Sand Hollow substation has been eliminated and knowing our goal is to get from Hemingway to Boardman. For the mapping, why not use our Harney County community criteria that has been documented and distributed tonight?

The routes you decide to map tonight are completely up to you. You can either work as one group, as individuals or in small groups. No one is excluded from proposing routes.

We will try a group mapping session and if other individuals want to propose routes that is fine. We don't really want this line going through Harney County, that is the reality of the situation. We can all work together and put up our own route. We should base our route on wanting the most direct route and the cost.

If you choose to work as a group that is fine. Everyone is encouraged to take part. Two GIS stations will be set up; the large group can work at one and the other station will be available if people want to work individually.

I don't believe the people to the east understand that our National Forest and public lands are Harney County's only economic development for the future. If a power line comes across Yellowjacket Lake, or close to it, that is in the heart of the forest. Myrtle Wilderness Park is one of the pristine places of our county. These wilderness areas could have future economic potential for tourism. If a power line comes through these areas it could damage that economic development potential.

After these routes have been developed through at least one iteration, or two iterations, we will have a public meeting to present all the routes to the public and get their comments.

Will it be shortly after those public meetings that some of these proposed routes will start to drop off the map?

Some of the routes may start dropping off at our next set of PAT meetings in December. Some of the routes would be extremely difficult to permit and the range of routes needs to be narrowed down.

With the Stop Idaho Power people, Idaho Power is going to have a fight no matter what. At the last meeting you estimated that not building the line on EFU land would eliminate 90 percent of the controversy in Malheur County?

One of the routes near Hemingway proposed by Stop Idaho Power goes around the EFU lands.

Is going over EFU land 90 percent of the problem?

When Idaho Power first began the Community Advisory Process that was a large part of the problem. We received comments that said the Stop Idaho Power group would not put up resistance if we avoided EFU land. However, there are other groups other than Stop Idaho Power that have their own interests.

Are we able to measure the distance of any proposed route?

The GIS is able to measure the distance of each route.

If we identify routes from Highway 20 north to I-84, could you show us how much private ground it would go over?

The GIS would be able to show how much private land the route crosses.

Can we see the line that Idaho Power originally proposed? What parts of the route were there problems with?

There was some controversy in the Durkee and Baker areas. In Baker County the big issue was around the Oregon Trail Interpretive Center. In the north toward Boardman there were problems because near the power plant there is a naval bombing range that cannot be crossed. Other than that, the controversy is limited to the area around Baker City, Medical Springs, Keating, Durkee, Malheur County and western Idaho. The original line had to pass through the Sand Hollow substation. To get to the substation the line would have had to cross a lot of farmland. Now that the Sand Hollow substation is removed, most of that controversy is gone.

Do you think the middle routes that are labeled C6 and C24 will present a lot of problems?

Those routes were developed by the Central PAT. They could be permitted; however, there are citizens in Grant County who do not like those routes.

Wasn't the C6/C24 route the one that went through the largest amount of National Forest?

It probably was because it angled across.

So the I-84 route is more doable if you can get through farmland down in the valley? Or is there still going to be a problem in Baker and La Grande?

The one place that is really difficult is the Oregon Trail Interpretive Center. There are sage grouse leks and view shed issues there. But we are currently working to find solutions for those issues. We are trying to find more information on whether the leks are active or not. Behind the Interpretive Center would be a good route. In Oregon we have an extensive band of EFU land that is irrigated. Under EFSC regulations, in order to cross that ground, we have to prove there is no other alternative route.

Do S19 and S9 solve the EFU problem?

Yes. Those lines go mostly over rangeland.

Some of the routes go through public land. Is this a problem?

A lot of people are concerned about high desert, such as the Oregon Natural Desert Association. There are many other groups in Grant County that want to protect the forestlands.

How are the landowners on that route responding? Have you heard from them yet?

We do not know yet. When we have a proposed route and a range of alternatives we will present these routes at a public meeting and get input at that time.

How are private property owners compensated? Is it significant?

Landowners receive a one-time payment negotiated with the landowner and based on the appraised value of that land from an independent appraiser. It is based on the market value of the land. Idaho Power will pay an easement price that we will negotiate with the property owner.

Mapping Workshop Summary

Following the presentations and question-and-answer session, a mapping workshop was held for the Harney County Project Advisory Team members from 6:30 p.m. to 9 p.m.

The objective of the mapping workshop was to enable Harney County residents to identify possible routes for the Boardman to Hemingway Transmission Line.

The Harney County PAT mapped two route segments at the mapping workshop. A map of the two segments is available on page 21.

Team members had the option to lay out routes on a paper map or work with a Geographic Information System (GIS) computer and operator to lay out routes at the computer stations. The GIS system contains a computerized database of opportunities and constraints. The team members chose to map their routes on the GIS computer stations.

Other informational materials included:

- **Large reference maps showing:**
 - Cultural and visual resources
 - Land use
 - Physical and natural resources
 - Fish and wildlife resources
 - Exclusion areas
 - Topography
 - General Constraints

- **Community criteria** that the Harney County Project Advisory Team identified as important to their area.

A Route Record Form was provided to each team member. On this form team members were asked to provide a written description and comments for the routes they identified. Each Route Record Form had a pre-assigned number that would be used to identify each route that was mapped. This assigned number would also identify the route during the analysis after the mapping workshop.

Team members were also asked to provide the following information on the Route Record Form:

- What method they used to map their route (paper map or GIS).
- If and how they could be contacted to answer questions for clarification concerning their route.
- Specific factors that made their route important.
- Any additional comments.

If team members did not map a route, they were asked to use the Route Record Form as a comment sheet to give input on other routes.

Comments

The two route segments that were mapped at the Harney County mapping workshop received the following assigned numbers: H7 and H8.

Below is a summary of comments that were submitted for each route on the Route Record Forms. Comments may include those that were provided by the developer of the route and other team members that commented on the route. Verbatim transcriptions of all Route Record Forms are available in Appendix 3.

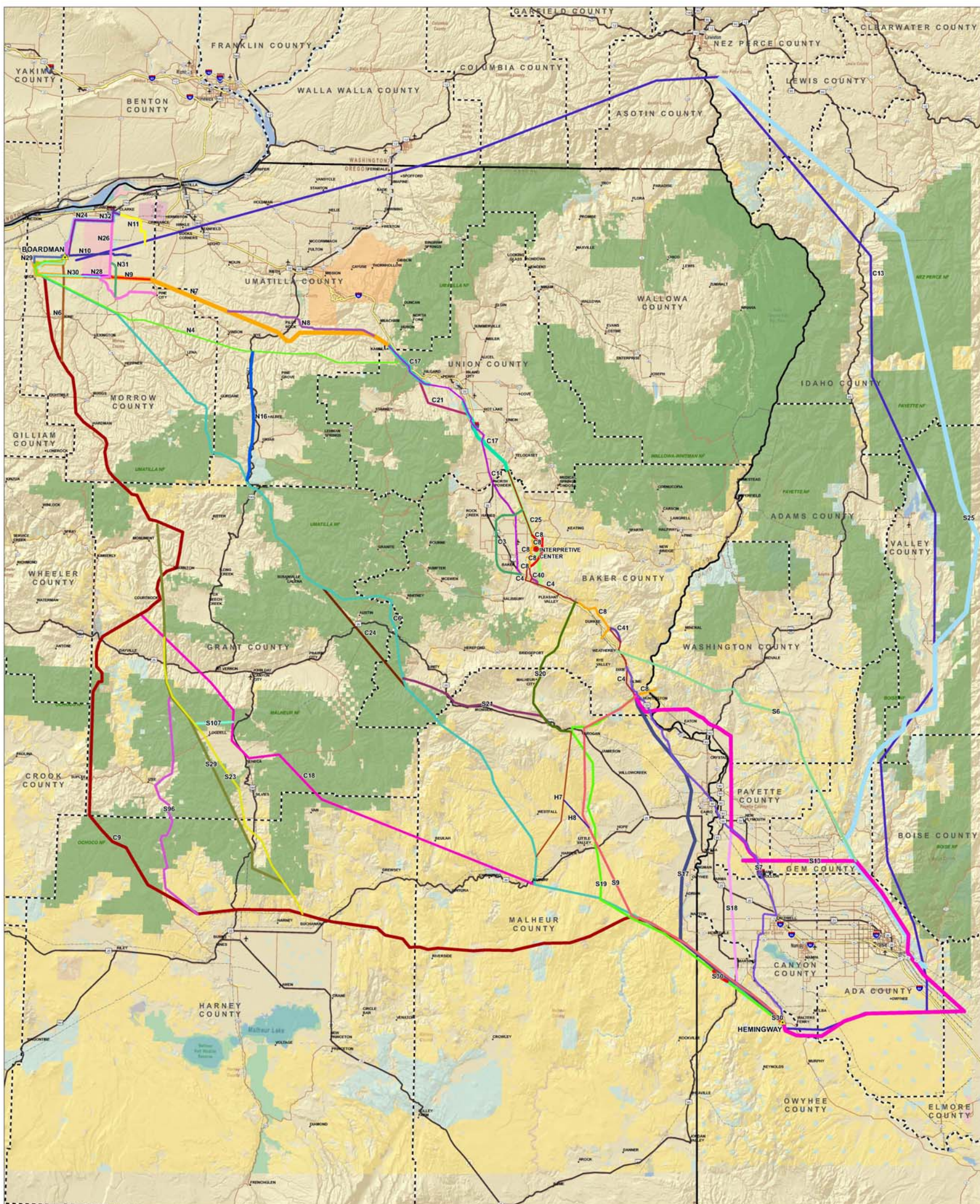
H7

- C6 to S21 that is an alternative route avoids EFU and leks, and moves back towards I-84. This line does not impact private lands as much as nearby alternatives.

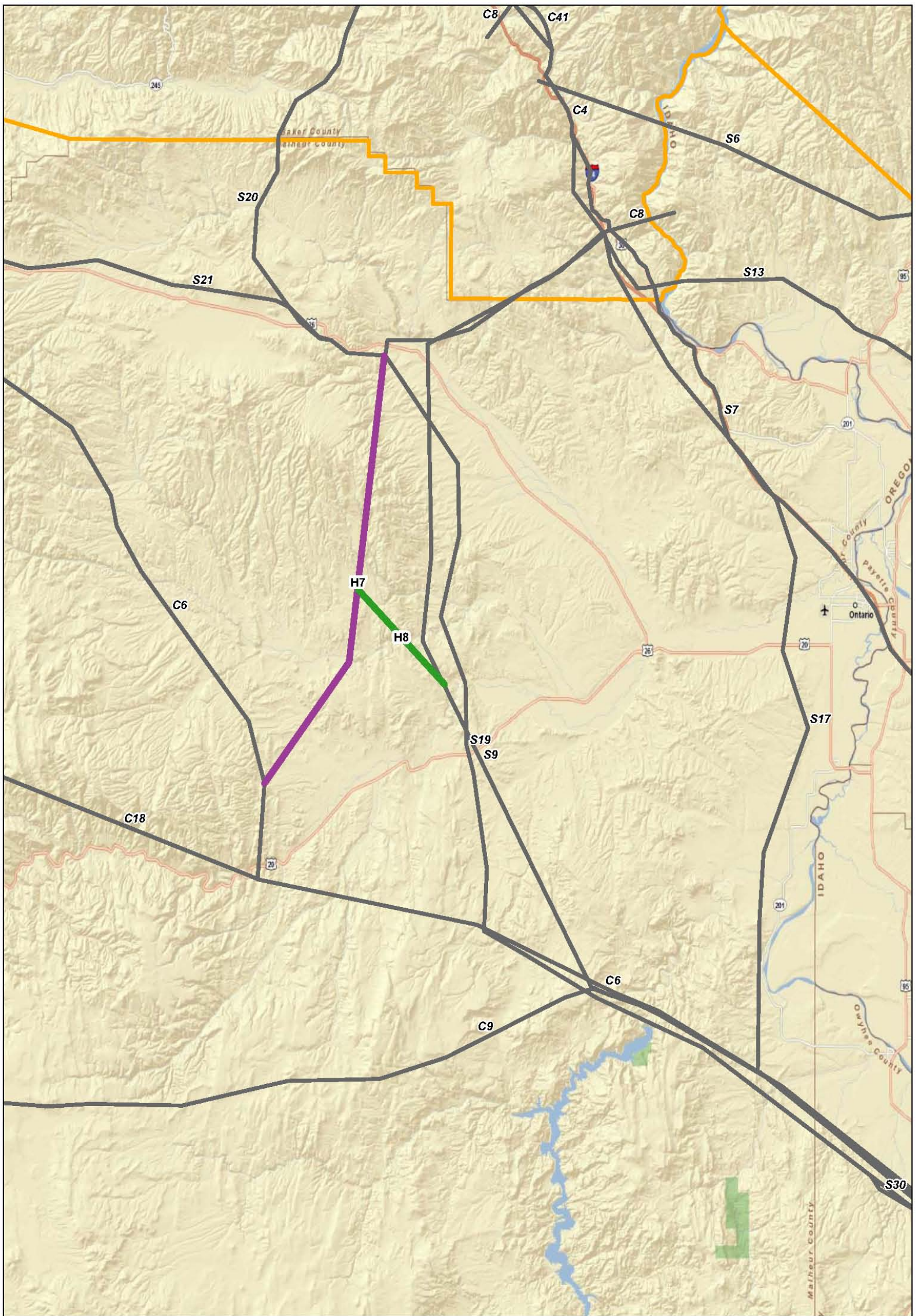
H8

- S9 alternative that shortens the distance of H7 but crosses EFU where there isn't irrigated agriculture.

Harney County PAT Proposed Routes



<p>NORTH, CENTRAL, SOUTH & HARNEY PAT PROPOSED ROUTES</p> <p>BOARDMAN - HEMINGWAY 500KV TRANSMISSION LINE PROJECT IDAHO POWER COMPANY</p> <p>DECEMBER 2009</p>		<ul style="list-style-type: none"> Substation Existing Transmission Line Oregon Trail Interpretive Center U.S. Forest Service Lands County Boundary Bureau of Land Management Bureau of Reclamation Indian Reservation Military National Park Service Other Federal Private State US Fish and Wildlife Service US Forest Service 	<ul style="list-style-type: none"> N4 N6 N7 N8 N9 N10 N11 N16 N24 N26 N28 N29 N30 N31 N32 C3 C4 C6 C9 C11 C13 C17 C18 C21 C24 C25 C40 C41 C8 - Proposed 500kV C8 - Relocated Existing 230kV S6 S7 S9 S13 S17 S18 S19 S20 S21 S23 S25 S29 S30 S96 S107 H7 H8 	<div style="text-align: center;"> </div> <div style="text-align: center;"> <p>0 15 30 Miles</p> </div>
---	--	--	---	--



<p>HARNEY COUNTY: ROUTES PROPOSED 11-18 BOARDMAN HEMINGWAY 500KV TRANSMISSION LINE PROJECT OREGON-IDAHO</p> <p>NOVEMBER 20, 2009</p>	<p>0 5 Miles</p>	<ul style="list-style-type: none"> — H7 — H8 — Other CAP Routes
--	----------------------	---