



# Boardman to Hemingway Project Advisory Team

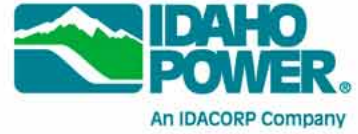
Project Advisory Team  
Meeting 3

# Agenda

- Meeting objectives
  - Idaho Power is committed to partnering with communities to identify proposed and alternate routes for the Boardman to Hemingway Transmission Line Project.
  - Present Analysis Methods
  - Present Analysis Conducted to Date of Each PAT Proposed Route

# Agenda

- 4:00 pm Welcome
- 4:10 pm Team business
- 4:20 pm Idaho Power recommendations
- 5:00 pm Grant and Harney input
- 5:15 pm Presentation of how analysis was conducted  
Initial analysis of PAT proposed routes
- 6:30 pm Dinner
- 7:00 pm Revised PAT proposed routes  
Comparison of PAT proposed routes (geographical grouping)  
PAT input
- 8:45 pm Next steps

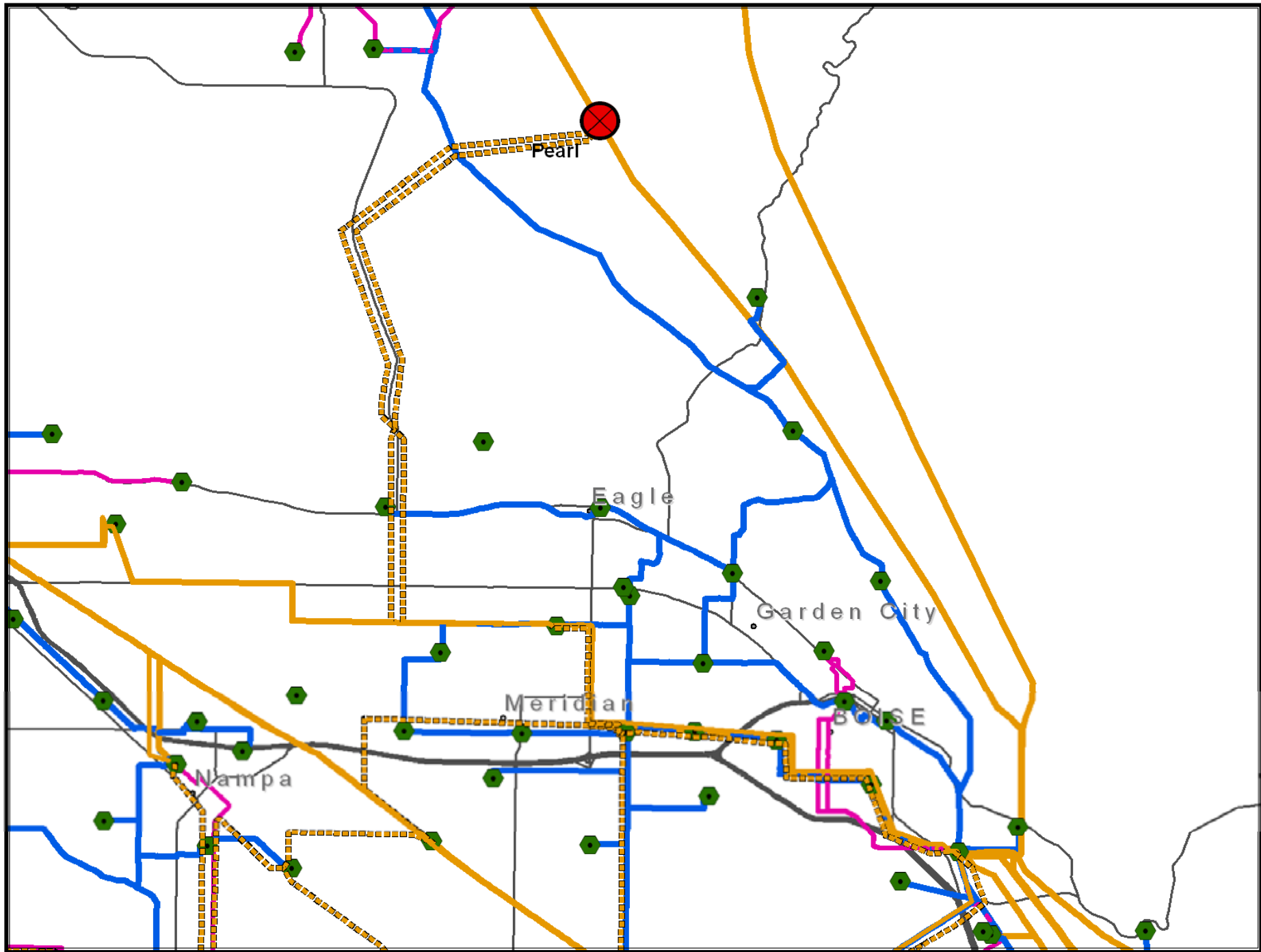


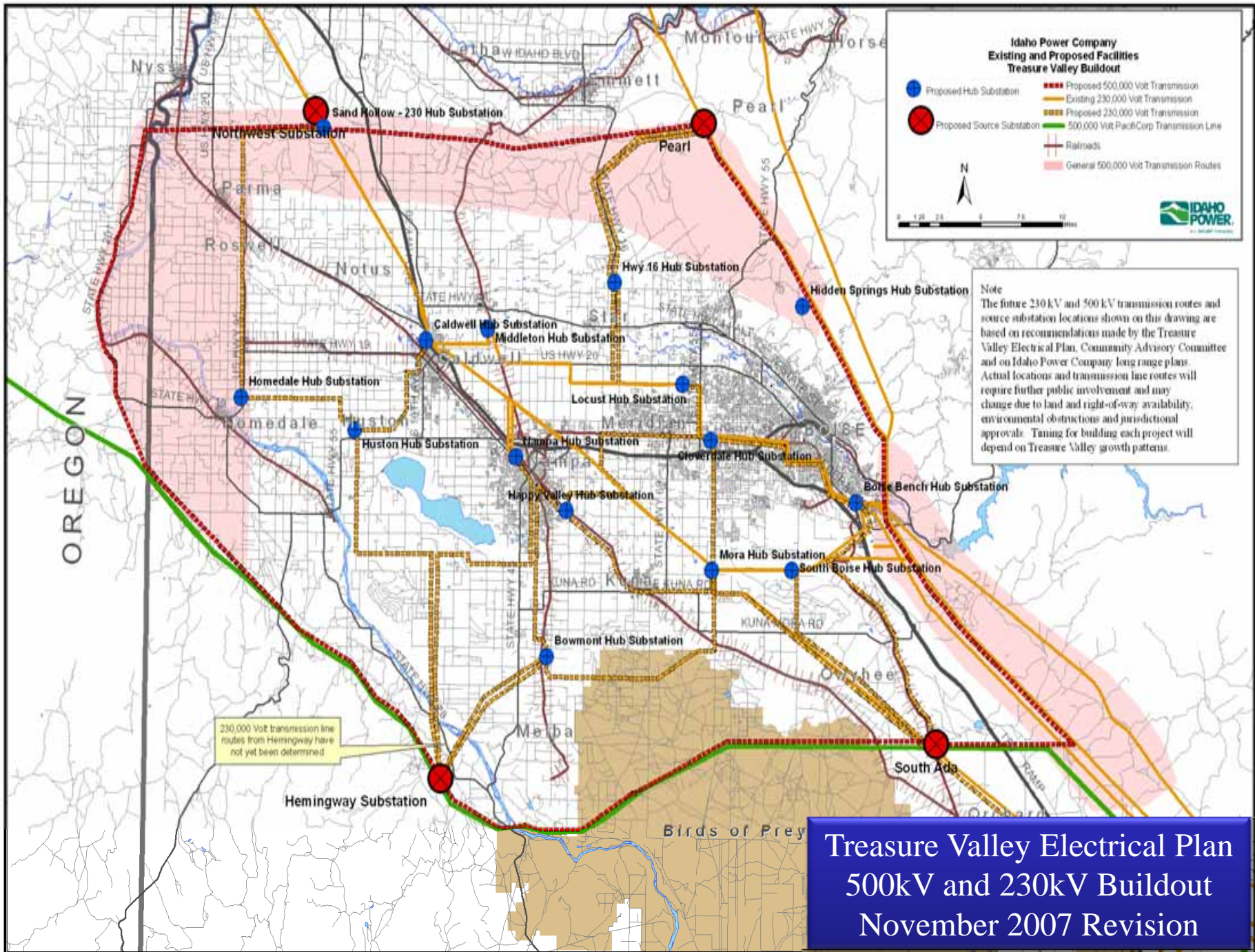
# Idaho Power Recommendations

- Re-evaluated project area
  - Looked at our future infrastructure requirements
    - Planning Evaluation

- Excerpt from Treasure Valley Electrical Plan, October 2006, Page 30

As mentioned in the Treasure Valley Electrical System Capacity section, two alternatives exist to reinforce the valley's electrical system without bringing in a new source from outside the valley. The first is to tap the existing Boise Bench – Brownlee 230-kV transmission line somewhere in the Pearl area and the second is tapping the Midpoint – Summer Lake 500-kV transmission line near Melba.



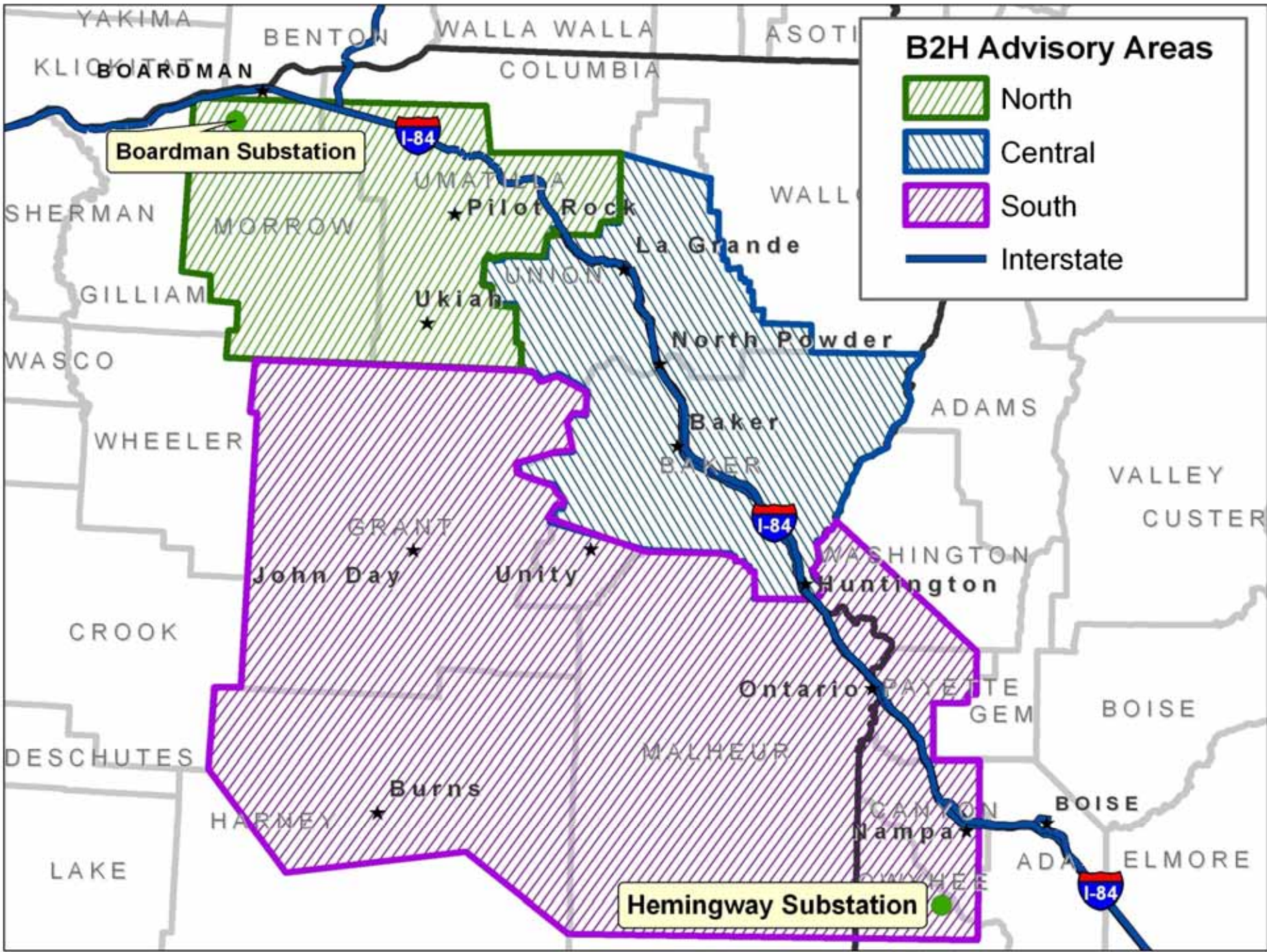


## Analysis Layout

- Excerpt from Treasure Valley Electrical Plan, October 2006, Page 21

The scenario chosen should give nearly worst-case results since it represents more line miles than any of the individual maps. This, of course is not the only scenario that would fit within the recommendations of the Community Advisory Committee. There are numerous choices for 230-kV and 500-kV transmission lines as well as some latitude for locating certain substations.

- Based on planning evaluation, Idaho Power believes expanding the project to the east is not best for our customers or for the Boardman to Hemingway project
- Cost
  - Infrastructure built before it is needed
    - 500kV/230kV substation in Pearl area
      - 2 – 230kV transmission lines from Pearl into the valley
    - 500kV/230kV Southeast Ada Substation to reinforce Boise Bench Substation
      - 1 – 230kV transmission line into the valley
    - If northern portion of Gateway West isn't built first, Boardman to Hemingway project would have to build transmission from Hemingway to southeast Ada County





# Grant and Harney Input

## Meetings Held To-Date

- Public meetings held in Burns and John Day
- PATs formed in Harney and Grant counties
- PAT meeting #1 in both Harney and Grant counties
- PAT meeting #2 in both Harney and Grant counties
  - Opportunity to comment on proposed routes, and
  - Propose their own routes
    - Harney County PAT proposed two new line segments in Malheur County
    - Grant County PAT did not propose any new routes

## Harney County PAT Concerns

- A route through Harney County is not practical
  - A route through Harney County would be much more expensive
  - A longer route will be more expensive and this will mean higher rates for Idaho Power customers
  - Environmental groups will not let a route through Harney County be built
- Benefits to Harney County are uncertain
  - Economic benefits to Harney County would likely be short-term
  - The line will not benefit Harney County unless it can be connected to nearby wind farms

# Harney County PAT Concerns

- The transmission line will negatively effect the environment
  - The transmission line will require construction of new access roads.
  - Undeveloped areas should be protected
  - Could create adverse effects to views, protected environmental areas and wildlife

## Harney County PAT Suggestions

- Use existing corridors
- Follow the I-84 corridor
- Shadow an existing line
- Site on public land
- Avoid Exclusive Farm Use (EFU) land
- Site line on public land
- Consider wildlife areas
- Use the most direct route from Boardman to Hemingway
- Use Idaho Power's original route

# Harney County Community Criteria

Placement Opportunities	Avoidance Areas
<ul style="list-style-type: none"> <li>● Existing energy corridors</li> <li>● I-84 corridor</li> <li>● Areas with potential for wind power</li> <li>● Direct route between Boardman and Hemingway</li> </ul>	<ul style="list-style-type: none"> <li>● Wildlife habitats               <ul style="list-style-type: none"> <li>○ Sage grouse leks</li> </ul> </li> <li>● Undeveloped or wilderness land</li> <li>● Riparian areas (strips of land that border creeks, rivers or other bodies of water.)</li> <li>● Exclusive Farm Use (EFU) land</li> <li>● Private land</li> <li>● Forests and timberland</li> <li>● Roadless areas</li> </ul>

## Grant County PAT Concerns

- The transmission line would have a negative effect on scenic areas
  - Grant County residents treasure scenic beauty and open space
  - The transmission line could lower property values by damaging views
- There are few clear benefits to Grant County of having the line constructed there
  - Construction jobs might bring only a short-term benefit.
  - Idaho Power would use Idaho crews for maintenance
  - Tax benefits to the county would be minimal if the line is built in Grant County

## Grant County PAT Concerns

- Building the transmission line so far west is not practical
  - It would be less expensive to use the shorter route near the I-84 corridor
  - Higher costs for Idaho Power will translate to higher costs for power users
- Residents of Malheur and Baker counties pushed the line over to Grant County because they don't want it there
  - Grant County residents should have been invited into the CAP process earlier
  - Grant County doesn't have as much influence as Malheur and Baker Counties because it has a very low population

## Grant County PAT Suggestions

- Grant County PAT members identified the following suggestions for siting the transmission line:
  - The line should be constructed close to the I-84 corridor
  - The line should be as short as possible to save Idaho Power money
  - The line should be available to be used locally for transmission if wind projects (or other alternative energy sources) are developed nearby
  - Idaho Power should seek in-state sources of energy so it doesn't have to transmit energy from Oregon
  - The line should not go through John Day Valley, where many Grant County residents live

# Grant County Community Criteria

Placement Opportunities	Avoidance Areas
<ul style="list-style-type: none"> <li>• Existing energy corridors</li> <li>• I-84 corridor</li> <li>• Direct route between Boardman and Hemingway</li> </ul>	<ul style="list-style-type: none"> <li>• Undeveloped areas</li> <li>• Wilderness areas</li> <li>• Rural areas</li> <li>• Roadless areas</li> <li>• Riparian areas (strips of land that border creeks, rivers or other bodies of water.)</li> <li>• Scenic areas               <ul style="list-style-type: none"> <li>○ The cedar grove</li> <li>○ The fossil beds</li> <li>○ View sheds</li> </ul> </li> <li>• Recreation areas</li> <li>• Wildlife habitats               <ul style="list-style-type: none"> <li>○ Big game winter range</li> <li>○ Sage grouse leks</li> </ul> </li> <li>• Forest land and old growth</li> <li>• Private property</li> <li>• Exclusive Farm Use (EFU) land</li> </ul>



# Presentation of How Analysis was Conducted



# Initial Analysis of PAT Proposed Routes



# Revised PAT Proposed Routes



# Comparison of PAT Proposed Routes (geographic grouping)



# PAT Input



# Next Steps



## Additional Information

- [www.boardmantohemingway.com](http://www.boardmantohemingway.com)
  - Project information
  - Links to BLM, Oregon Department of Energy, Idaho Power
  - Comment forms