

# Welcome!

---

## **Boardman to Hemingway Transmission Line Project (B2H)**

Public Scoping Meeting

Vale District Office



---

Boardman to Hemingway Transmission Line Project

Public Scoping Meetings, Oct. 21 – Oct. 30, 2008

# NEPA Process Overview

---

## **Boardman to Hemingway Transmission Line Project (B2H)**

Lucas Lucero  
National Project Manager  
Bureau of Land Management (BLM)

Vale District Office



---

Boardman to Hemingway Transmission Line Project

Public Scoping Meetings, Oct. 21 – Oct. 30, 2008

## Project overview

---

- Idaho Power Company proposes to construct, operate and maintain a 298-mile 500 kilovolt (kV) transmission line from Boardman, Oregon to near Melba, Idaho
- Idaho Power has applied for rights-of-way and special use permits from the BLM and U.S. Forest Service (USFS)
- Land ownership includes
  - 86% privately owned
  - 11% managed by the BLM
  - 2% managed by the USFS
  - 1% state or other lands



---

Public Scoping Meetings, Oct. 21 – Oct. 30, 2008

## What would this project look like?

---

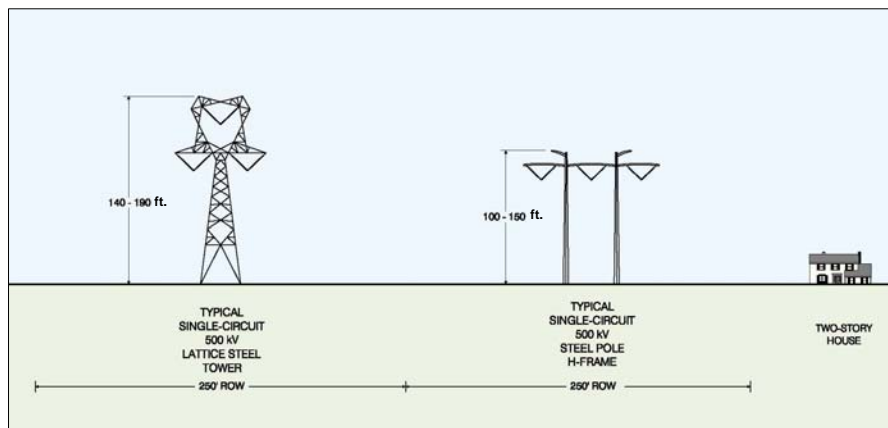
- The proposal includes:
  - Tower heights
    - Lattice steel tower: **150-190 feet**
    - Steel pole H-frame: **100-150 feet**
  - Tower footprint: **40 ft. x 40 ft.**
  - Right-of-way: **250 feet**
  - Span lengths: **1200-1500 feet**
  - Ground clearance: **Approx 35 feet**



---

Public Scoping Meetings, Oct. 21 – Oct. 30, 2008

## What would this project look like?



## Federal Decisions To Be Made

- In response to Idaho Power Company's ROW application the BLM must decide whether or not to approve the proposed action on BLM administered lands
- In response to Idaho Power Company's special use permit application the USFS must decide whether or not to approve the proposed action on USFS administered lands



## What is NEPA?

- National Environmental Policy Act (NEPA) that requires federal agencies to assess and disclose environmental impacts of a proposed action prior to making a final decision
- **What is an Environmental Impact Statement (EIS)?** An EIS is a document that describes in detail:
  - Environmental effects of the proposed action including reasonable alternatives to the proposed action



## Agency Cooperation

- The following agencies have requested to participate as cooperating agencies in the NEPA process:
  - USFS, Wallowa-Whitman National Forest (OR)
  - Oregon Department of Energy (OR)
  - Idaho Governor's Office (Idaho Office of Energy Resources) (ID)
  - County of Malheur (OR)
  - Payette County (ID)
  - Morrow County (OR)
  - Union County (OR)
  - Baker County (OR)
  - Umatilla County (OR)

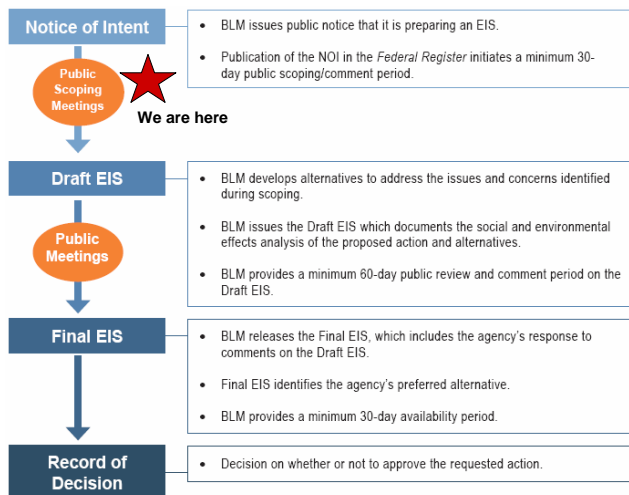


## NEPA continued

- **Why is an EIS needed?** A draft EIS is being prepared, under the direction of the BLM as lead federal agency, because the proposed action may have significant environmental effects
- **Why are the BLM and cooperating agencies using the same draft EIS?** To eliminate duplication while satisfying NEPA and comparable State and local requirements.



## NEPA Process



## Purpose of Scoping Meetings

---

- Scoping is the process where interested parties are invited at the early stage of the project to provide input on:
  - **the issues and impacts that should be addressed in the draft EIS and;**
  - **the degree to which those issues and impacts should be analyzed.**
- The intent of scoping is to focus the draft EIS on significant issues and reasonable alternatives to the proposed action



## Public Comment Opportunities

---

- Scoping period
  - **Scoping comment period ends November 14, 2008**
  - Submit your comments via mail, e-mail or online
- Future public comment opportunities include:
  - Attending public meetings about and commenting on the draft EIS
  - Commenting on the final EIS



## BLM Contact

---

Lucas Lucero

Bureau of Land Management

Phone: 702-515-5059

E-mail: [Lucas\\_Lucero@blm.gov](mailto:Lucas_Lucero@blm.gov)

Web: [www.boardmantohemingway.com](http://www.boardmantohemingway.com)

Vale District Office

