

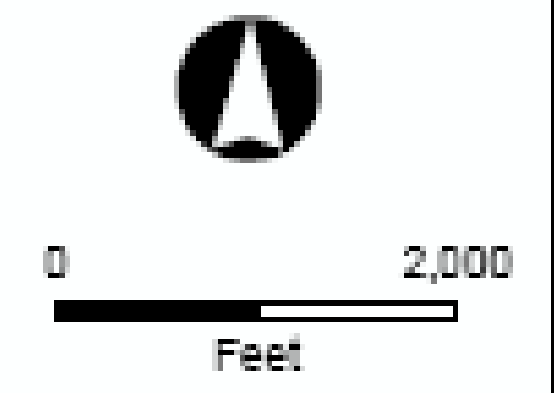
DETAILED ROUTE MAP
1:24K AERIAL IMAGE
Proposed Route



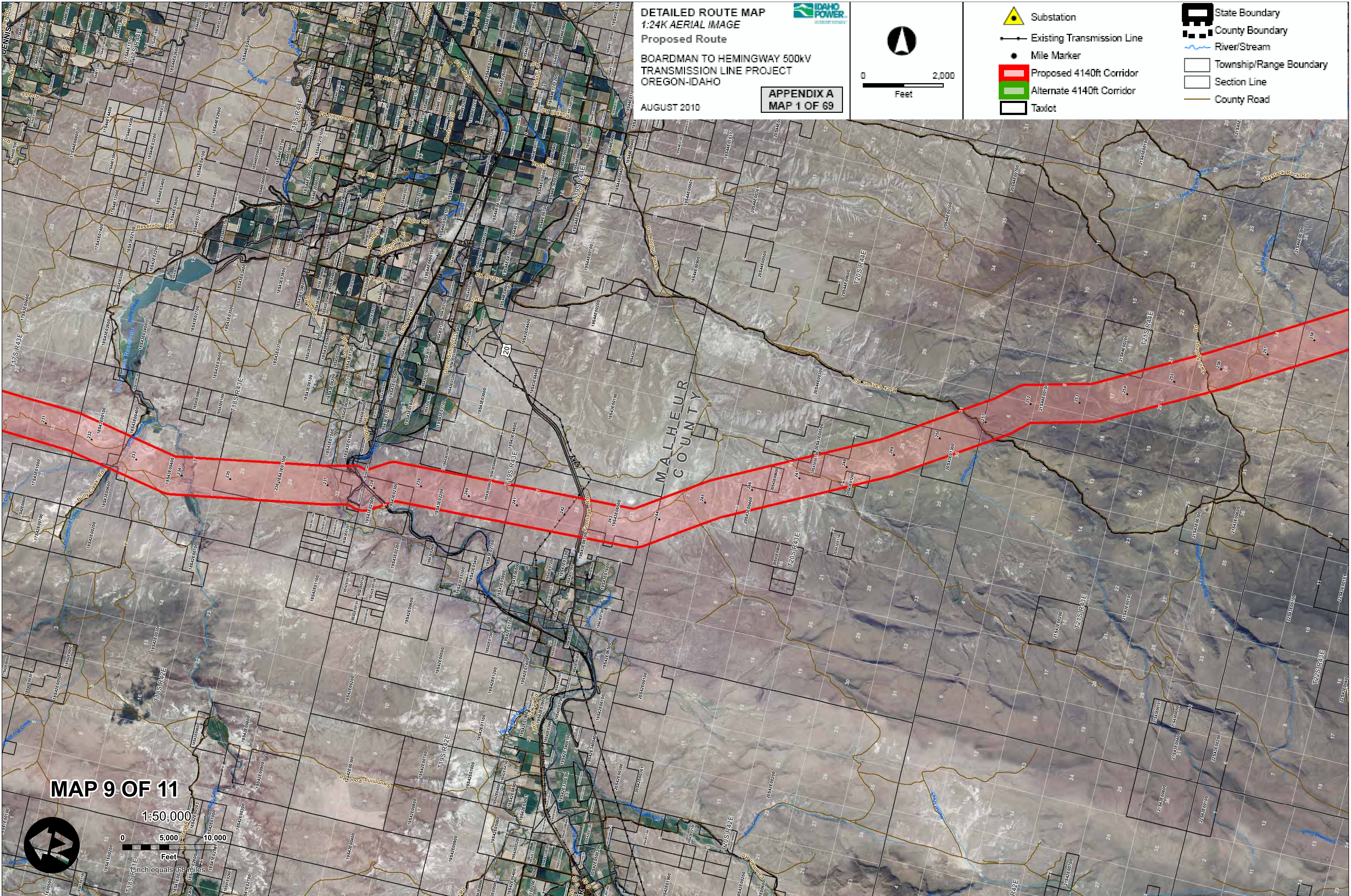
**BOARDMAN TO HEMINGWAY 500kV
TRANSMISSION LINE PROJECT**
OREGON-IDAHO

AUGUST 2010

APPENDIX A
MAP 1 OF 69



- Substation
- Existing Transmission Line
- Mile Marker
- Proposed 4140ft Corridor
- Alternate 4140ft Corridor
- Taxlot
- State Boundary
- County Boundary
- River/Stream
- Township/Range Boundary
- Section Line
- County Road



MAP 9 OF 11

1:50,000

