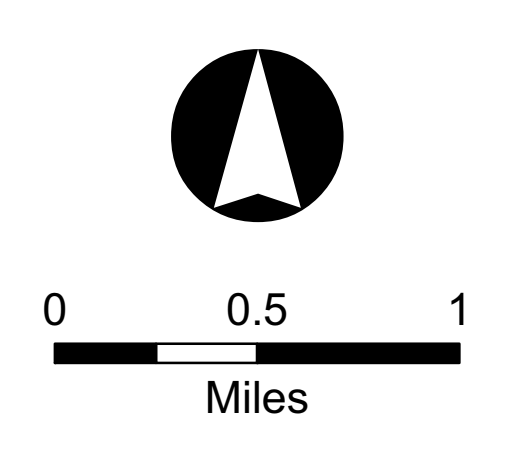


EFSEC NOTIFICATION CORRIDORS
 BOARDMAN - HEMINGWAY 500kV
 TRANSMISSION LINE PROJECT
 OREGON - IDAHO

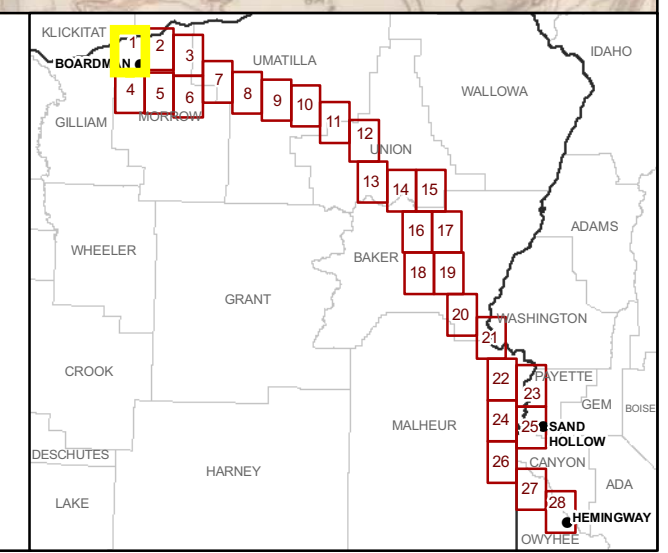
MAP 1 OF 28
MORROW COUNTY

OCTOBER 21, 2008



PRELIMINARY CORRIDORS
 AS SHOWN AT PUBLIC SCOPING MEETINGS

- Approximate Substation Location
- Proposed Corridor 10-21-08
- Alternative Corridor 10-21-08
- Parcel Boundary



P:\Gis\Work\GIS_EIS\MapDocs\MapDocs_031208\Scoping\Meeting\B01_Parcel_wf03a.Dwg