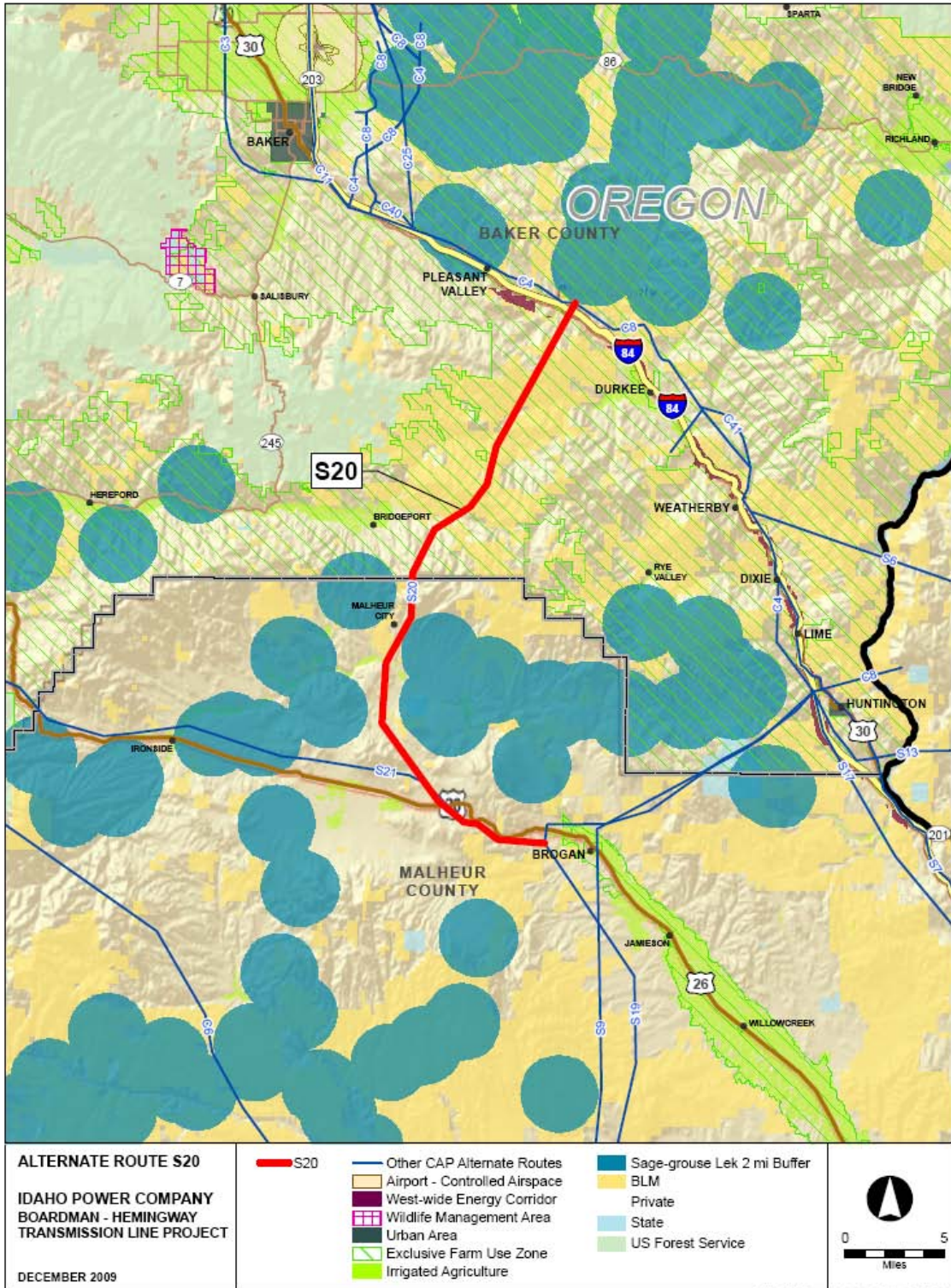
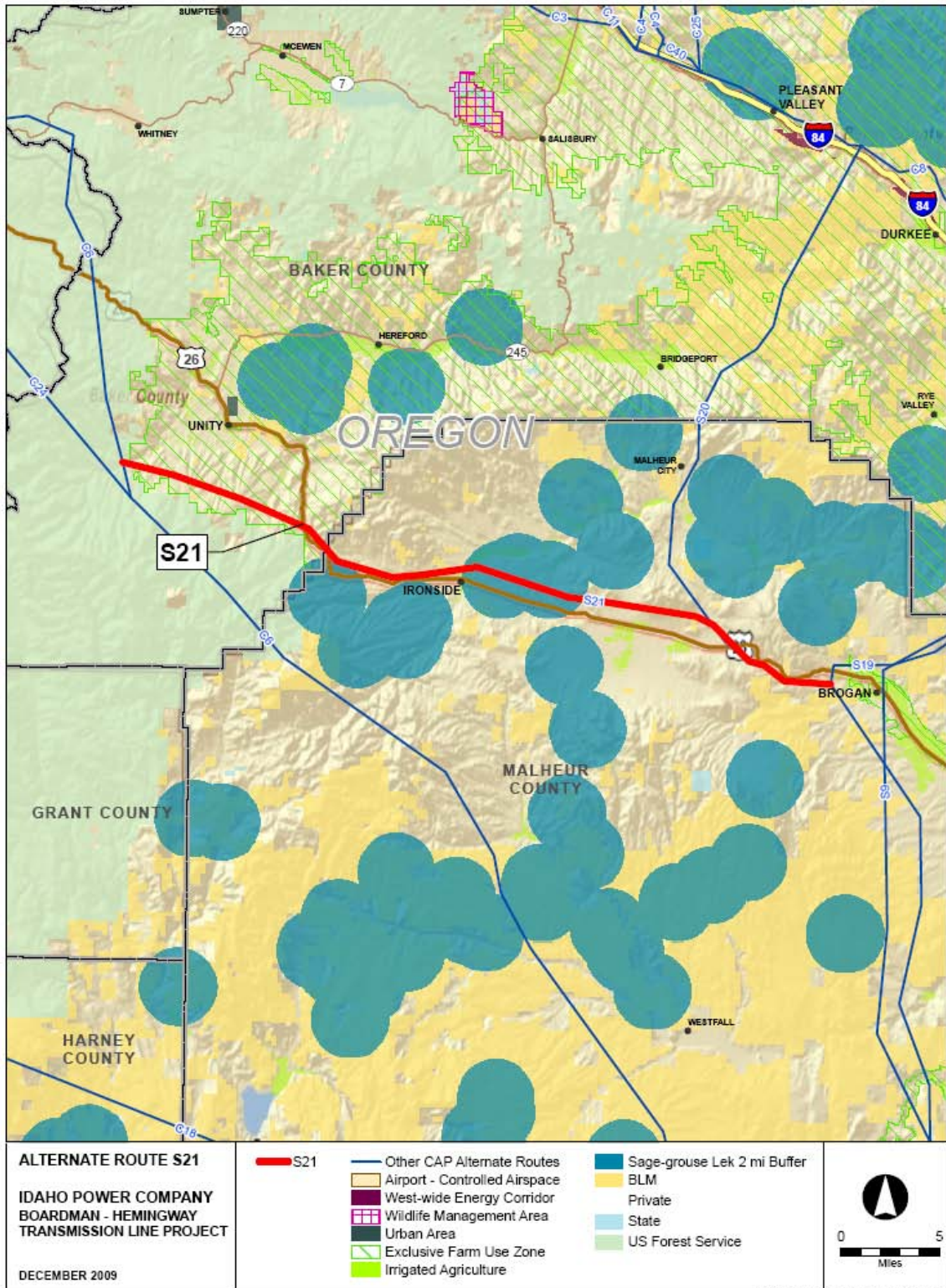


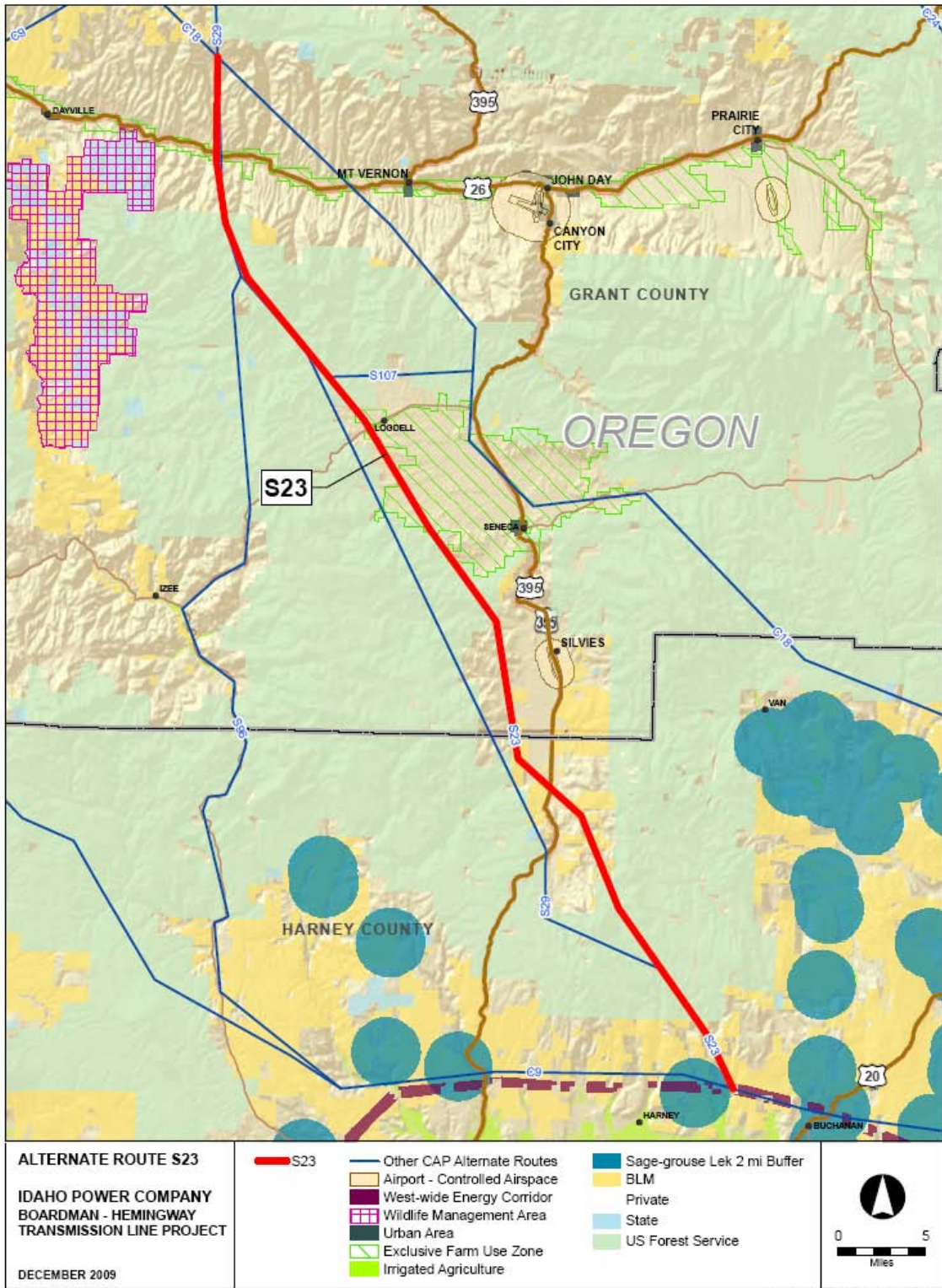
BOARDMAN TO HEMINGWAY: S19	
	<i>Total Miles:</i> 54.4
Common Name	Miles
Land Use	
Exclusive Farm Use & Irrigated Agriculture	0.8
Exclusive Farm Use & Class I & II Soils	0.5
Exclusive Farm Use	8.2
Grazing Allotment	40.7
Irrigated Agriculture	1.9
Vale District Off Highway Vehicle: Open	47.3
The Nature Conservancy: Portfolio	3.2
Proposed Wilderness Study Area	9.2
Baker County, OR Zoning	
Baker County: Exclusive Farm Use	7.1
Oregon Statewide Zoning	
Oregon Statewide Zoning: Agriculture	8.2
Oregon Statewide Zoning: Agriculture (Range)	46.2
Oregon Statewide Zoning: Rural Industrial	0.0
Other Features	
Within 200ft of Existing Pipeline	0.1
Vale District Utility Corridor	2.0
West-wide Energy Corridor	0.2
Ownership	
Bureau of Land Management	27.2
Other Federal Lands	0.3
Private	24.0
State Land	2.9
Geological Resources	
Erosion Hazard: High	0.8
Erosion Hazard: Low	3.7
Erosion Hazard: Moderate	3.8
Within 500ft of Fault Line	3.0
Prime Farmland (based on Soil Data)	4.4
Oregon Landslide Feature: Landslide	0.5
Arable Land: Soils Class II	0.9
Arable Land: Soils Class III	0.3
Arable Land: Soils Class IV	0.2
Fish and Wildlife	
Big Game Deer Winter Range (Oregon)	36.7
Big Game Elk Winter Range (Oregon)	18.8
Sage-grouse Core Area: NonHabitat/Other Vegetation (Oregon)	3.4
Sage-grouse Core Area: Potential Habitat (Oregon)	30.7
Sage-grouse Core Area: Sagebrush Habitat (Oregon)	20.3
Sage-grouse Occupied Habitat (Oregon)	31.6
Visual Resources	
Visual Resource Management Class III	3.6



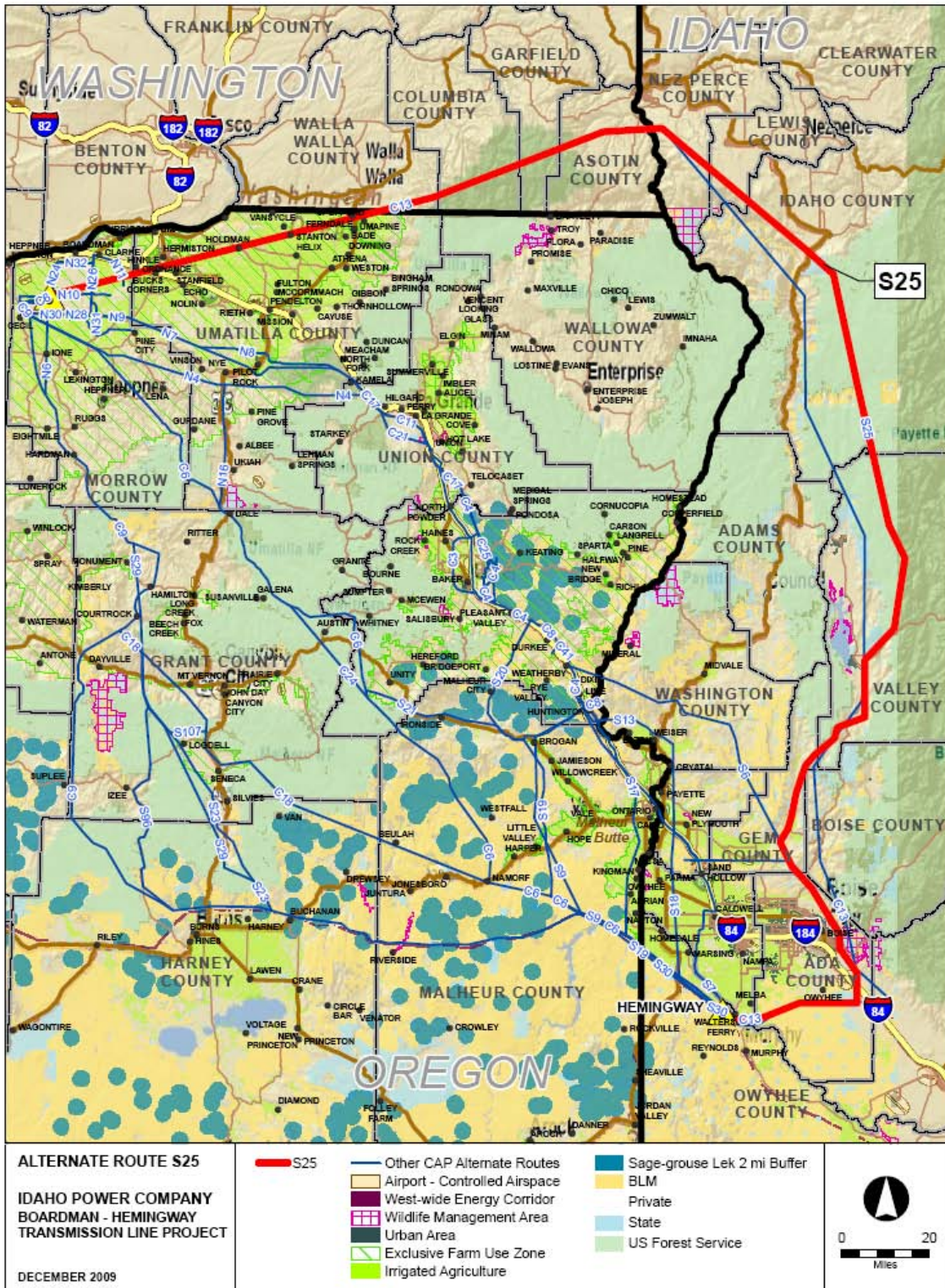
BOARDMAN TO HEMINGWAY: S20	
	<i>Total Miles:</i> 35.3
Common Name	Miles
Cultural Resources	
Within 1200ft Historic Trail	0.4
Land Use	
ODFW Conservation Opportunity Areas	2.0
Exclusive Farm Use & Irrigated Agriculture	0.1
Exclusive Farm Use & Class I & II Soils	0.1
Exclusive Farm Use	16.7
Forested Land	0.5
Grazing Allotment	30.3
Irrigated Agriculture	0.2
Vale District Off Highway Vehicle: Open	18.7
The Nature Conservancy: Portfolio	1.6
Baker County, OR Zoning	
Baker County: Exclusive Farm Use	16.7
Baker County: Mining Extraction	0.1
Oregon Statewide Zoning	
Oregon Statewide Zoning: Agriculture	16.7
Oregon Statewide Zoning: Agriculture (Range)	18.7
Other Features	
Within 200ft of Existing Pipeline	0.1
Vale District Utility Corridor	1.6
Ownership	
Bureau of Land Management	9.9
Private	25.4
Geological Resources	
Erosion Hazard: Low	12.9
Erosion Hazard: Moderate	3.3
Within 500ft of Fault Line	2.2
Prime Farmland (based on Soil Data)	11.5
Oregon Landslide Feature: Fan	0.5
Oregon Landslide Feature: Landslide	0.1
Arable Land: Soils Class II	0.1
Arable Land: Soils Class III	0.2
Arable Land: Soils Class IV	0.5
Fish and Wildlife	
Big Game Deer Winter Range (Oregon)	16.9
Big Game Elk Winter Range (Oregon)	30.6
Sage-grouse Core Area: NonHabitat/Other Vegetation (Oregon)	4.4
Sage-grouse Core Area: Potential Habitat (Oregon)	22.2
Sage-grouse Core Area: Sagebrush Habitat (Oregon)	8.7
Sage-grouse Occupied Habitat (Oregon)	17.4
Visual Resources	
Within 1200ft Scenic Byway	1.0
Visual Resource Management Class II (Baker County)	4.1



BOARDMAN TO HEMINGWAY: S21	
	<i>Total Miles:</i> 39.2
Common Name	Miles
Land Use	
ODFW Conservation Opportunity Areas	1.1
Exclusive Farm Use	10.7
Forested Land	1.1
Grazing Allotment	15.3
Irrigated Agriculture	1.4
National Forest Recreation Opportunity Spectrum: Roaded Natural	0.4
Vale District Off Highway Vehicle: Open	27.4
The Nature Conservancy: Portfolio	5.7
Baker County, OR Zoning	
Baker County: Exclusive Farm Use	10.7
Baker County: Primary Forest	0.4
Baker County: Timber Grazing	0.6
Oregon Statewide Zoning	
Oregon Statewide Zoning: Agriculture	10.7
Oregon Statewide Zoning: Agriculture (Range)	27.6
Oregon Statewide Zoning: Forest	0.9
Other Features	
Vale District Utility Corridor	3.6
Ownership	
Bureau of Land Management	0.8
Private	38.0
U.S. Forest Service	0.4
Geological Resources	
Erosion Hazard: High	0.2
Erosion Hazard: Low	5.4
Erosion Hazard: Moderate	4.9
Within 500ft of Fault Line	1.4
Prime Farmland (based on Soil Data)	8.6
Arable Land: Soils Class III	2.0
Fish and Wildlife	
Big Game Deer Winter Range (Oregon)	10.2
Big Game Elk Winter Range (Oregon)	28.4
Within 2-mile Sage-grouse Lek Buffer	7.6
Sage-grouse Core Area: NonHabitat/Other Vegetation (Oregon)	4.0
Sage-grouse Core Area: Potential Habitat (Oregon)	20.2
Sage-grouse Core Area: Sagebrush Habitat (Oregon)	14.9
Sage-grouse Occupied Habitat (Oregon)	22.3
Visual Resources	
Visual Quality Objective - Wallowa-Whitman NF: Partial Retention	0.0
Visual Quality Objective - Wallowa-Whitman NF: Retention	0.4



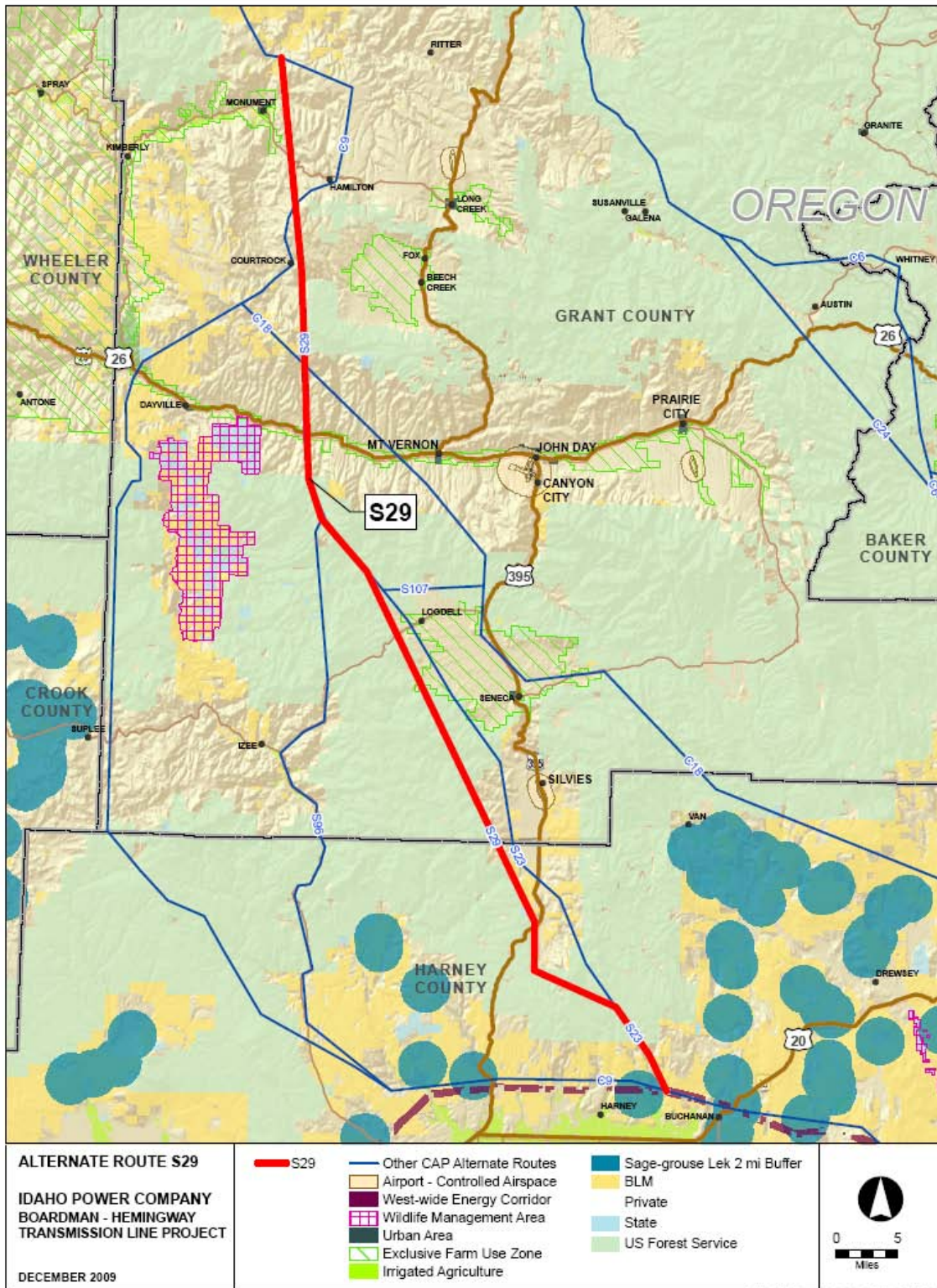
BOARDMAN TO HEMINGWAY: S23	
	<i>Total Miles:</i> 68.3
Common Name	Miles
Land Use	
ODFW Conservation Opportunity Areas	4.5
Exclusive Farm Use	6.5
Grazing Allotment	24.6
National Forest Old Growth Forest Stands	1.0
The Nature Conservancy: Portfolio	18.1
Proposed Wilderness Study Area	0.8
Harney County, OR Zoning	
Harney County: Farm & Ranch Use - 160 AC	14.7
Harney County: Forest Use	9.5
Oregon Statewide Zoning	
Oregon Statewide Zoning: Agriculture	6.5
Oregon Statewide Zoning: Agriculture (Range)	26.8
Oregon Statewide Zoning: Forest	35.0
Other Features	
West-wide Energy Corridor	0.1
Ownership	
Bureau of Land Management	7.6
Private	31.3
U.S. Forest Service	29.3
Geological Resources	
Erosion Hazard: Low	9.7
Erosion Hazard: Moderate	0.7
Within 500ft of Fault Line	2.2
Prime Farmland (based on Soil Data)	9.4
Oregon Landslide Feature: Fan	0.9
Oregon Landslide Feature: Landslide	5.0
Arable Land: Soils Class V	0.2
Fish and Wildlife	
Big Game Deer Winter Range (Oregon)	10.6
Big Game Elk Winter Range (Oregon)	20.9
Sage-grouse Occupied Habitat (Oregon)	14.0
Spring Chinook Streams	1 crossing
Summer Steelhead Streams	11 crossings
Visual Resources	
Within 1200ft Scenic Byway	0.5
Visual Quality Objective - Malheur NF: Partial Retention	2.9



MAD/CAP_Process/Analysis of Original CAP Rites

Central PAT Meeting #4
 December 17, 2009
 Appendices

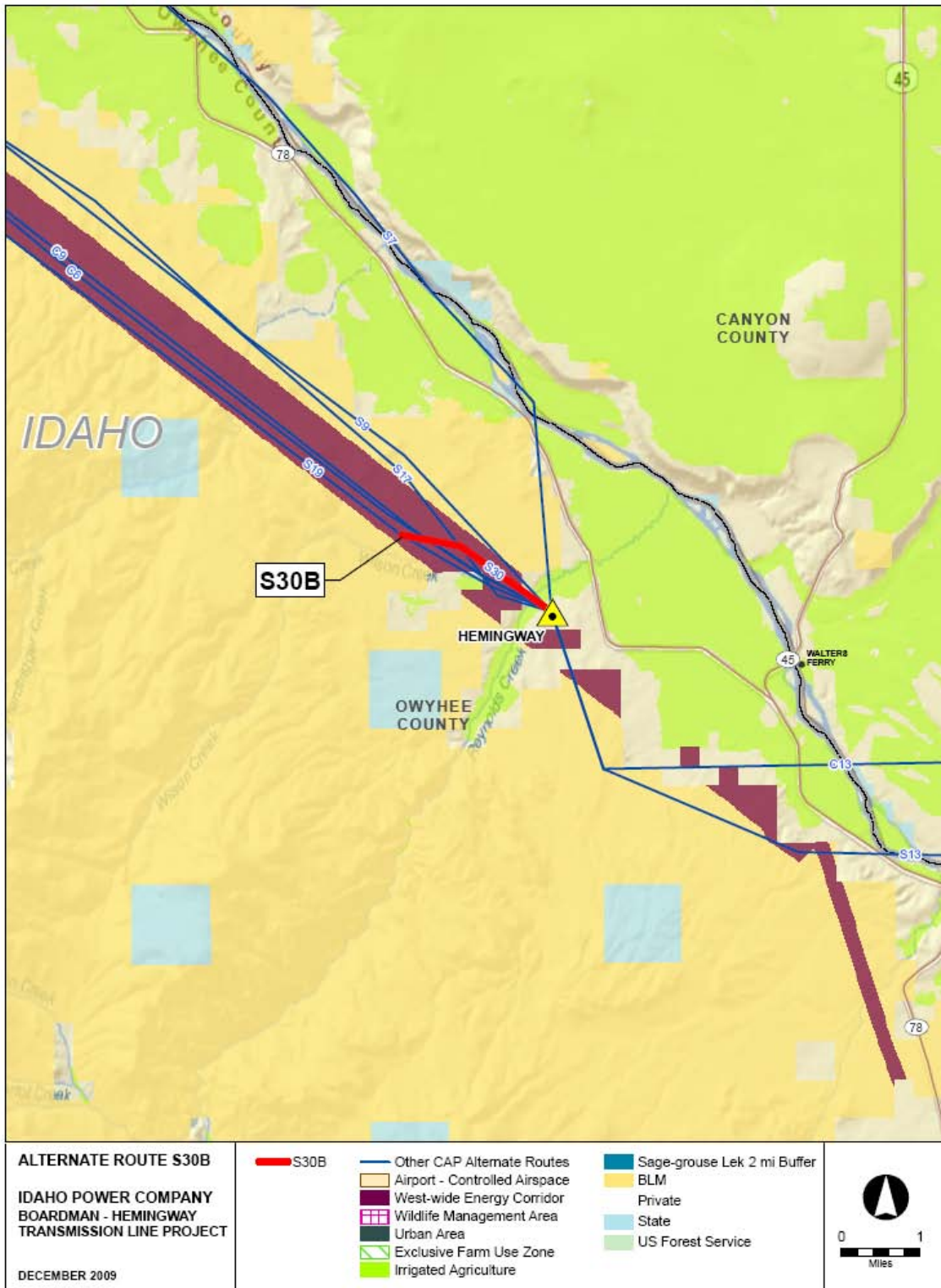
BOARDMAN TO HEMINGWAY: S25	
	Total Miles: 417.0
Common Name	Miles
Cultural Resources	
Within 1200ft Historic Trail	3.0
Land Use	
Area of Critical Environmental Concern	12.3
Restricted Airspace	7.0
Naval Weapons System Training Facility	6.3
ODFW Conservation Opportunity Areas	26.3
Exclusive Farm Use & Irrigated Agriculture	49.2
Exclusive Farm Use & Class I & II Soils	25.0
Exclusive Farm Use	72.4
Grazing Allotment	62.7
Irrigated Agriculture	58.7
The Nature Conservancy: Portfolio	25.4
The Nature Conservancy: Preserve	3.1
Urban Growth Boundary - Oregon	1.3
Urban Area	4.5
Morrow County, OR Zoning	
Morrow County: Exclusive Farm Use	12.4
Morrow County: General Industrial	1.0
Morrow County: Public Use	6.3
Oregon Statewide Zoning	
Oregon Statewide Zoning: Agriculture	72.4
Oregon Statewide Zoning: Rural Industrial	3.7
Oregon Statewide Zoning: Rural Residential	0.3
Oregon Statewide Zoning: Urban	1.3
Other Features	
Within 200ft of Existing Pipeline	0.3
West-wide Energy Corridor	1.2
Ownership	
Bureau of Land Management	28.8
U.S. Forest Service - ID	78.2
Military Lands	6.4
Other Federal Lands	1.2
State Land	21.7
Private	64.6
Geological Resources	
Within 500ft of Fault Line	8.7
Idaho Landslide Susceptibility: High	1.7
Idaho Landslide Susceptibility: Low	182.7
Idaho Landslide Susceptibility: Moderate	2.3
Idaho Landslide Susceptibility: Sus-Mod	43.5
Oregon Landslide Feature: Fan	1.9
Arable Land: Soils Class I	3.4
Arable Land: Soils Class II	25.3
Arable Land: Soils Class III	13.8
Arable Land: Soils Class IV	18.0
Arable Land: Soils Class VI	11.2
Fish and Wildlife	
Big Game Crucial Winter Range (Idaho)	47.0
Big Game Deer Winter Range (Oregon)	2.1
Big Game Elk Winter Range (Oregon)	2.1
IDCDC At Risk Plants: General Location	18.8
IDCDC At Risk Plants: Higher Precision Location	8.1
IDCDC Special Status Fish Area	14.5
Pronghorn Habitat (Idaho)	5.2
Sage-grouse Core Area: NonHabitat/Other Vegetation (Oregon)	59.6
Sage-grouse Core Area: Potential Habitat (Oregon)	18.2
Sage-grouse Restoration Habitat Type 2: Annual Grass Understories (Idaho)	10.9
Spring Chinook Streams	4 crossings
Summer Chinook Streams	3 crossings
Summer Steelhead Streams	12 crossings
Bull Trout Streams	18 crossings
White Sturgeon Streams	1 crossing
Visual Resources	
Within 1200ft Scenic Byway	2.1
Visual Quality Objective - Malheur NF: Maximum Modification	5.6
Visual Quality Objective - Umatilla NF: Modification	8.7
Visual Quality Objective - Umatilla NF: Partial Retention	11.0
Visual Quality Objective - Umatilla NF: Preservation	5.0
Visual Quality Objective - Umatilla NF: Retention	2.5
Visual Resource Management Class IV (Four Rivers Field Office)	6.7
Visual Resource Management Class I	5.2
Visual Resource Management Class II	50.3
Visual Resource Management Class III	6.3
Water and Wetlands	
Snake River	0.1
Floodplain: 500-yr Flood Zone	0.1
Floodplain: Zone A	0.6
Floodplain: Zone ANI	6.4



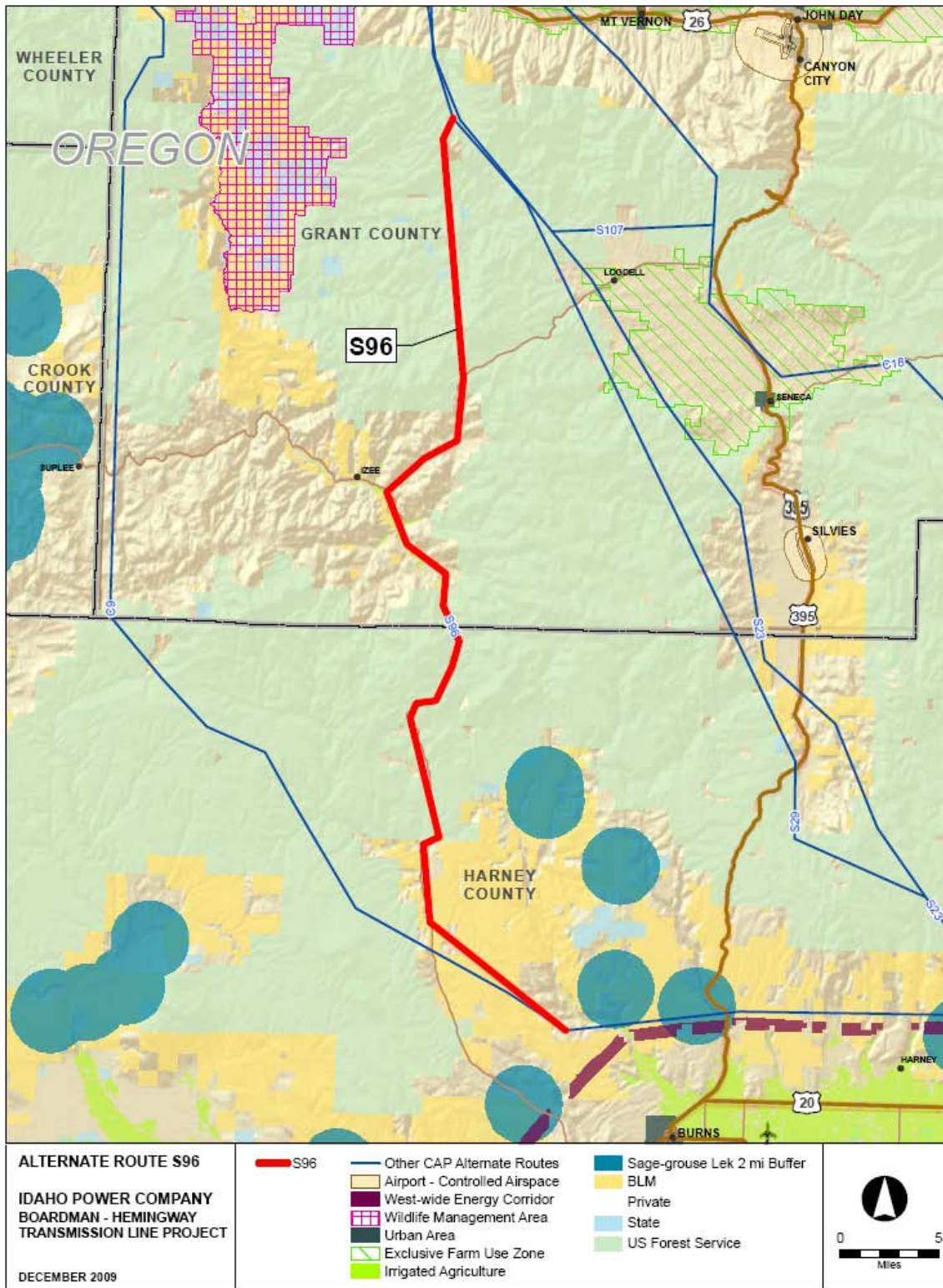
BOARDMAN TO HEMINGWAY: S29	
	<i>Total Miles:</i> 94.6
Common Name	Miles
Land Use	
ODFW Conservation Opportunity Areas	0.7
Exclusive Farm Use & Irrigated Agriculture	0.0
Exclusive Farm Use	1.2
Forested Land	51.1
Grazing Allotment	27.9
Irrigated Agriculture	0.1
National Forest Old Growth Forest Stands	5.3
The Nature Conservancy: Portfolio	27.2
Proposed Wilderness Study Area	1.3
Harney County, OR Zoning	
Harney County: Farm & Ranch Use - 160 AC	9.7
Harney County: Forest Use	16.8
Oregon Statewide Zoning	
Oregon Statewide Zoning: Agriculture	1.2
Oregon Statewide Zoning: Agriculture (Range)	35.5
Oregon Statewide Zoning: Forest	57.9
Other Features	
West-wide Energy Corridor	0.1
Ownership	
Bureau of Land Management	3.4
Private	40.1
State Land	0.9
U.S. Forest Service	50.1
Geological Resources	
Erosion Hazard: Low	5.9
Erosion Hazard: Moderate	1.2
Within 500ft of Fault Line	2.8
Prime Farmland (based on Soil Data)	7.3
Oregon Landslide Feature: Landslide	5.0
Fish and Wildlife	
Big Game Deer Winter Range (Oregon)	21.9
Big Game Elk Winter Range (Oregon)	37.3
Sage-grouse Occupied Habitat (Oregon)	3.8
Spring Chinook Streams	2 crossings
Summer Steelhead Streams	8 crossings
Visual Resources	
Within 1200ft Scenic Byway	0.5
Visual Quality Objective - Malheur NF: Partial Retention	6.7



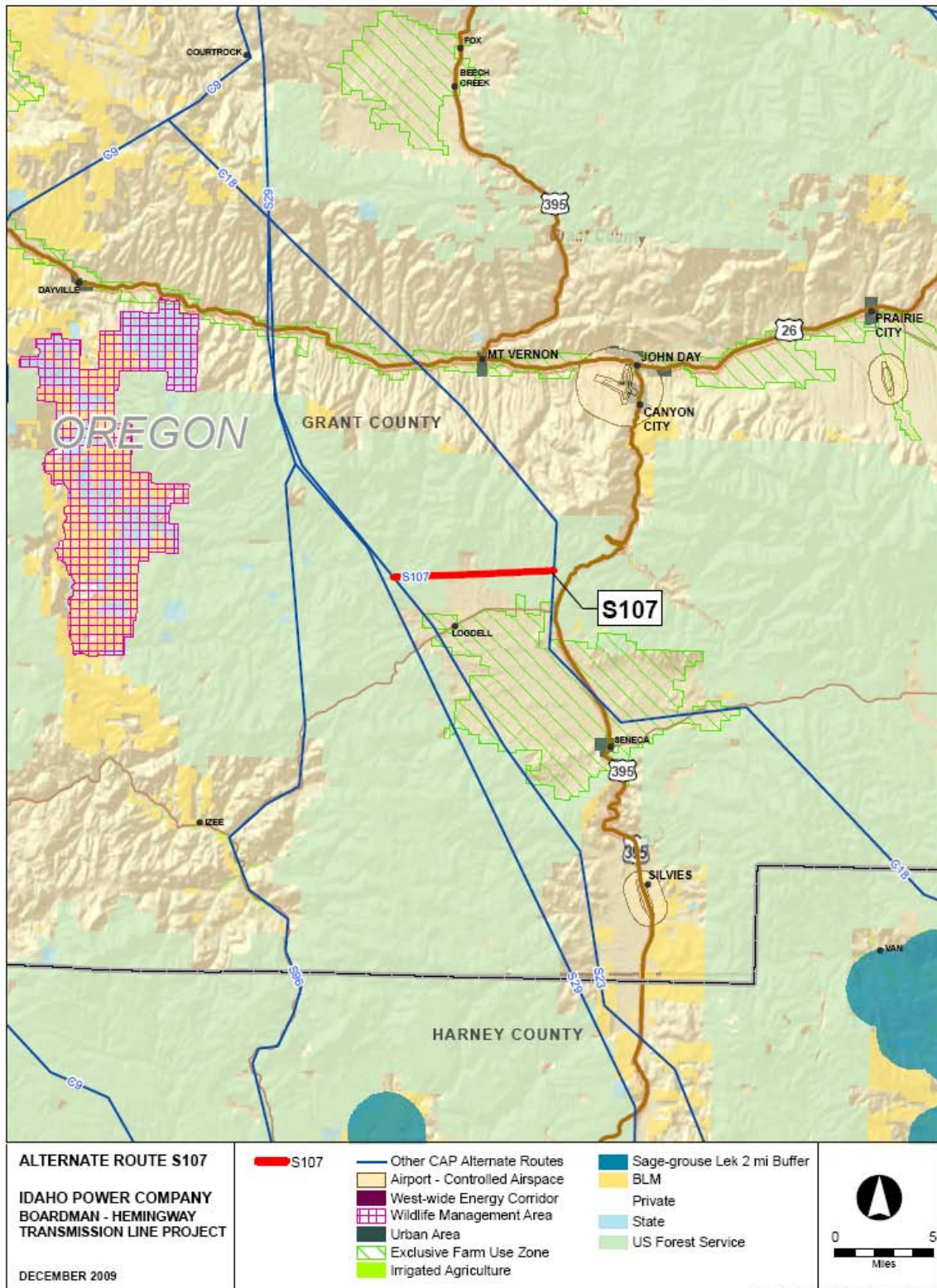
BOARDMAN TO HEMINGWAY: S30A	
<i>Total Miles:</i> 3.8	
Common Name	Miles
Land Use	
Grazing Allotment	3.8
The Nature Conservancy: Portfolio	3.3
Ownership	
Bureau of Land Management	3.0
State Land	0.8
Geological Resources	
Erosion Hazard: High	0.2
Erosion Hazard: Low	2.9
Erosion Hazard: Moderate	0.7
Within 500ft of Fault Line	1.0
Idaho Landslide Susceptibility: Low	3.8
Fish and Wildlife	
IDCDC At Risk Plants: Higher Precision Location	0.1
Pronghorn Habitat (Idaho)	3.8
Visual Resources	
Visual Resource Management Class III	3.1



BOARDMAN TO HEMINGWAY: S30B	
	<i>Total Miles:</i> 2.2
Common Name	Miles
Land Use	
Grazing Allotment	2.2
Irrigated Agriculture	0.1
Other Features	
West-wide Energy Corridor	1.7
Ownership	
Bureau of Land Management	1.7
Geological Resources	
Erosion Hazard: High	0.1
Erosion Hazard: Low	1.5
Erosion Hazard: Moderate	0.6
Within 500ft of Fault Line	0.2
Idaho Landslide Susceptibility: Low	2.2
Prime Farmland (based on Soil Data)	0.1
Arable Land: Soils Class IV	0.2
Fish and Wildlife	
IDCDC At Risk Plants: Higher Precision Location	0.3
Pronghorn Habitat (Idaho)	2.2

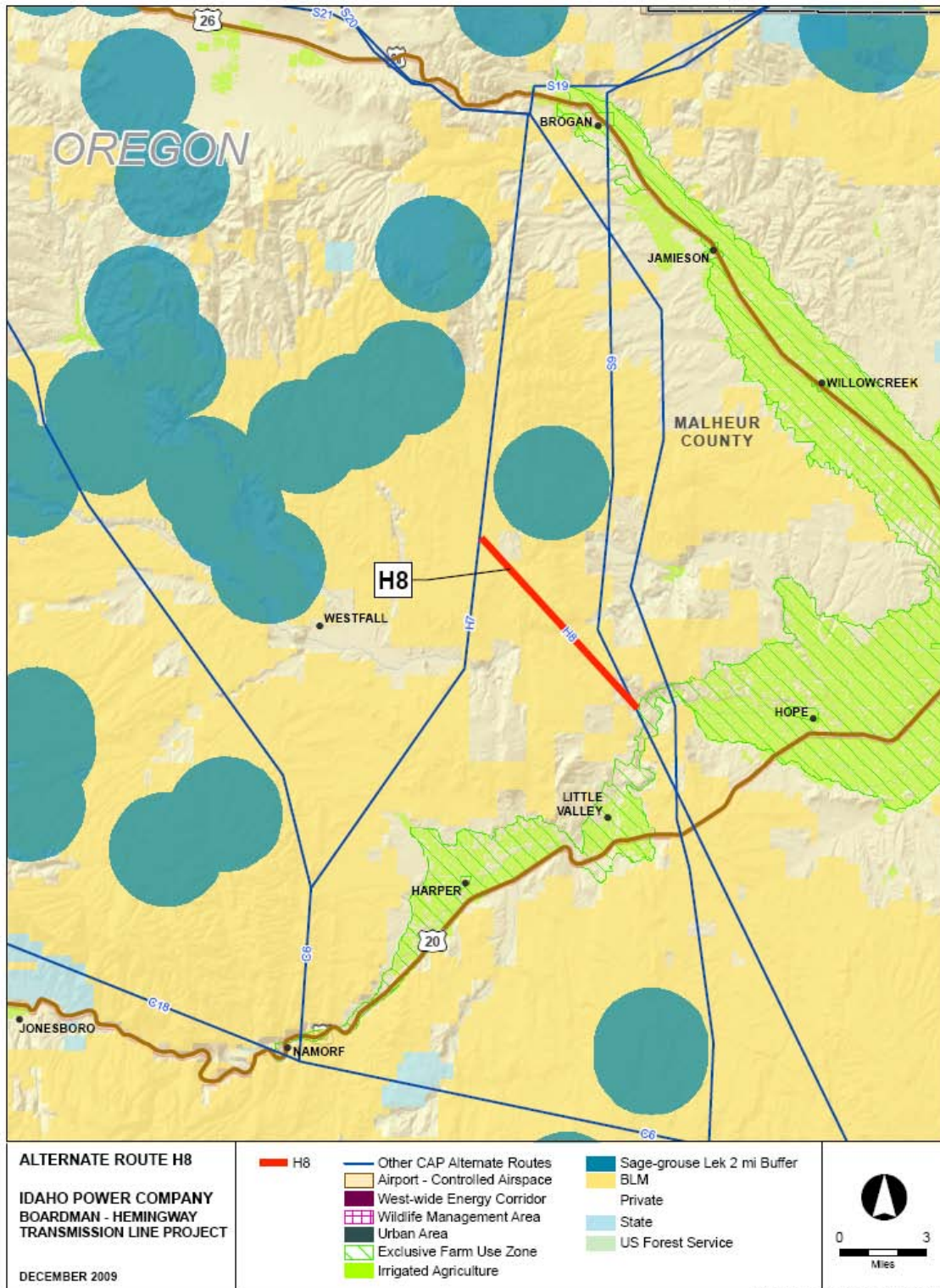


BOARDMAN TO HEMINGWAY: S96	
	<i>Total Miles:</i> 55.2
Common Name	Miles
Land Use	
ODFW Conservation Opportunity Areas	1.3
Forested Land	24.4
Grazing Allotment	23.8
Irrigated Agriculture	0.8
National Forest Old Growth Forest Stands	2.7
The Nature Conservancy: Portfolio	12.5
Proposed Wilderness Study Area	0.6
BLM Wild and Scenic River: Recreation	3.5
National Forest Wild and Scenic River: Recreation	3.3
Harney County, OR Zoning	
Harney County: Farm & Ranch Use - 160 AC	13.4
Harney County: Forest Use	12.5
Oregon Statewide Zoning	
Oregon Statewide Zoning: Agriculture (Range)	25.7
Oregon Statewide Zoning: Forest	29.5
Ownership	
Bureau of Land Management	7.2
Private	20.2
State Land	0.0
U.S. Forest Service	27.8
Geological Resources	
Erosion Hazard: Low	10.4
Erosion Hazard: Moderate	3.0
Within 500ft of Fault Line	1.7
Prime Farmland (based on Soil Data)	13.0
Oregon Landslide Feature: Landslide	4.6
Arable Land: Soils Class V	1.2
Fish and Wildlife	
Big Game Deer Winter Range (Oregon)	17.4
Big Game Elk Winter Range (Oregon)	34.7
Sage-grouse Occupied Habitat (Oregon)	3.2
Summer Steelhead Streams	1 crossing
Visual Resources	
Within 1200ft Scenic Byway	23.4
Visual Quality Objective - Malheur NF: Partial Retention	5.2



BOARDMAN TO HEMINGWAY: S107	
	<i>Total Miles:</i> 8.3
Common Name	Miles
Land Use	
Forested Land	6.5
Irrigated Agriculture	0.1
Oregon Statewide Zoning	
Oregon Statewide Zoning: Forest	8.3
Ownership	
Private	1.5
U.S. Forest Service	6.8
Geological Resources	
Oregon Landslide Feature: Landslide	3.1
Fish and Wildlife	
Big Game Elk Winter Range (Oregon)	1.7
Sage-grouse Occupied Habitat (Oregon)	0.2
Visual Resources	
Visual Quality Objective - Malheur NF: Partial Retention	0.7

BOARDMAN TO HEMINGWAY: H7	
	<i>Total Miles:</i> 28.6
Common Name	Miles
Land Use	
Grazing/Pasture - OR	26.5
Vale District Off Highway Vehicle: Limited to Existing Routes	2.6
The Nature Conservancy: Portfolio	1.7
Proposed Wilderness Study Area	5.2
Oregon Statewide Zoning	
Oregon Statewide Zoning: Agriculture (Range)	28.6
Ownership	
Bureau of Land Management	23.6
Private	5.0
Geological Resources	
Within 500ft of Fault Line	2.4
Oregon Landslide Feature: Landslide	0.1
Fish and Wildlife	
Big Game Deer Winter Range (Oregon)	1.7
Big Game Elk Winter Range (Oregon)	17.0
Sage-grouse Core Area: NonHabitat/Other Vegetation (Oregon)	2.1
Sage-grouse Core Area: Potential Habitat (Oregon)	19.7
Sage-grouse Core Area: Sagebrush Habitat (Oregon)	6.8
Sage-grouse Occupied Habitat (Oregon)	5.6
Visual Resources	
Visual Resource Management Class IV - OR	23.6



BOARDMAN TO HEMINGWAY: H8	
	<i>Total Miles: 8.0</i>
Common Name	Miles
Land Use	
Grazing/Pasture - OR	8.0
Oregon Statewide Zoning	
Oregon Statewide Zoning: Agriculture (Range)	8.0
Ownership	
Bureau of Land Management	6.8
Bureau of Reclamation	0.3
Private	0.9
Geological Resources	
Oregon Landslide Feature: Landslide	0.4
Within 500ft of Fault Line	1.8
Fish and Wildlife	
Big Game Deer Winter Range (Oregon)	0.3
Big Game Elk Winter Range (Oregon)	4.1
Sage-grouse Core Area: NonHabitat/Other Vegetation (Oregon)	0.7
Sage-grouse Core Area: Potential Habitat (Oregon)	4.6
Sage-grouse Core Area: Sagebrush Habitat (Oregon)	2.7
Visual Resources	
Visual Resource Management Class IV - OR	6.8