

# Overview

The Boardman to Hemingway Transmission Line Project is being proposed by Idaho Power to:

- Transmit electricity from geographically diverse generation sources to communities throughout the Pacific Northwest and Intermountain West.
- Increase the capacity of the Northwest transmission system.
- Improve the reliability of our electrical system.
- Ensure Idaho Power's ability to provide future service for its customers, as well as other utility customers in Idaho and Oregon.

All communities in the Pacific Northwest and Intermountain regions will benefit from a reliable interconnected transmission system.

# How will this line improve the reliability of our electrical system?

The Boardman to Hemingway transmission line will improve reliability by:

- Providing an additional transmission line connecting Idaho Power's transmission system with systems in the Pacific Northwest.
- Providing additional capacity that can be held in reserve for importing energy from the Northwest should Idaho Power lose generation.

*Idaho Power is responsible for providing reliable service and it is part of our mission.*

# Transmission Needs

Transmission lines are needed to carry energy from generation sources (hydropower dams, wind farms, etc.) to the users.

The power imported and exported on the Boardman to Hemingway transmission line would come from a variety of Northwest sources, including:

- Hydroelectric
- Natural gas
- Coal
- Nuclear
- Wind resources

Energy demand varies seasonally. Idaho Power's service area experiences peak electrical use in the summer due to the heavy use of irrigation and air conditioning. Currently, no additional capacity is available during these summer peaks.

# Transmission Line Construction

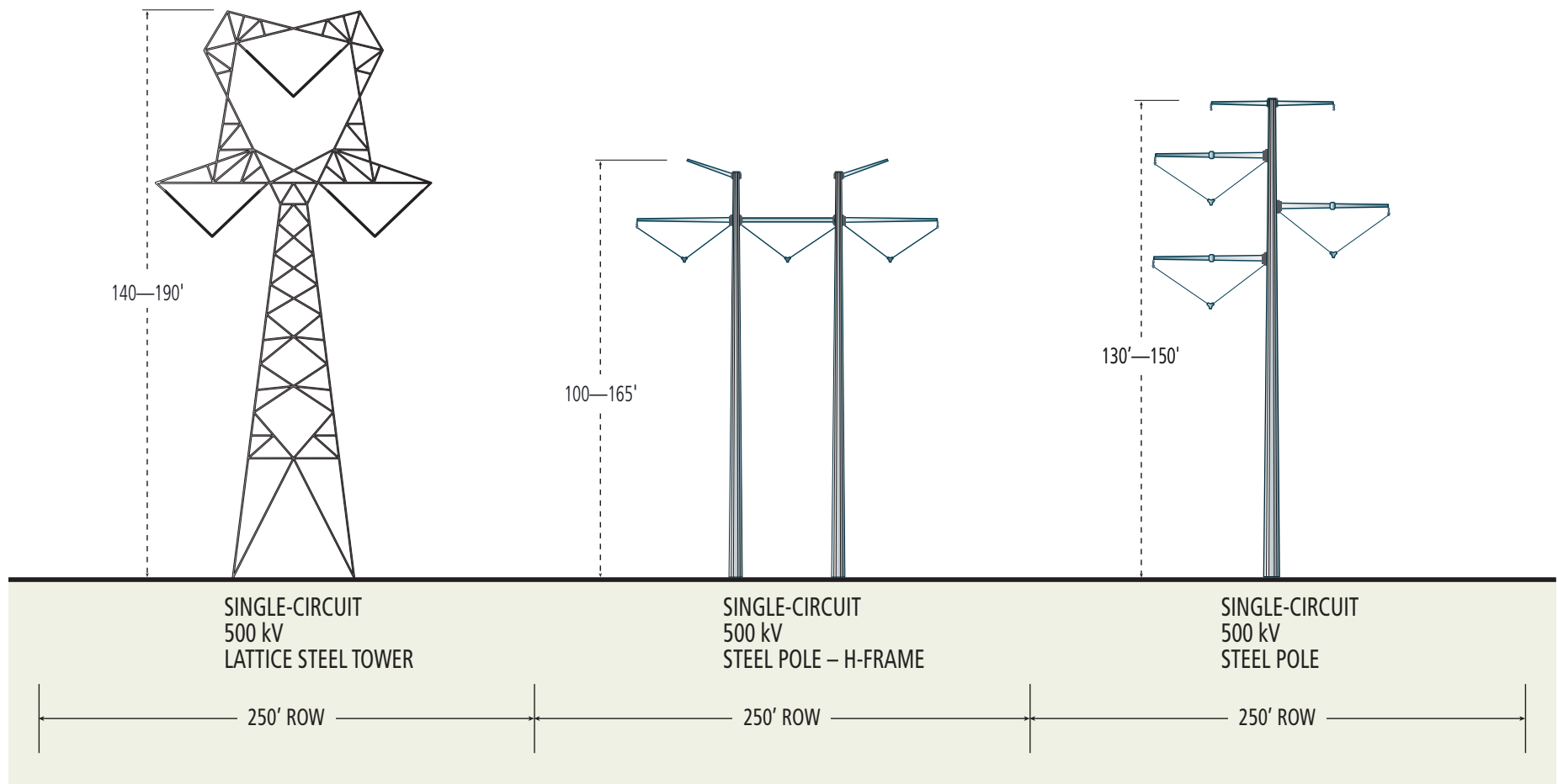
Construction of the proposed transmission line would begin after Idaho Power received permits from the BLM and USFS, and an Energy Facility Site Certificate from the State of Oregon. Once the project is approved, Idaho Power could begin construction by 2013.

Idaho Power will oversee all transmission line and substation design and construction. Idaho Power plans to contract with construction companies to build the line.

During construction, Idaho Power will utilize best management practices in order to prevent the spread of invasive plant species.

Idaho Power will work with landowners to coordinate the timing of construction to minimize short-term impacts.

# Design Specifications (estimated)



Note: Heights may vary due to terrain and engineering constraints.  
Other tower types may be used based on local circumstances

## **Working with Landowners**

If it is determined that the line route will cross a parcel of privately owned land, Idaho Power will negotiate a right-of-way agreement with the individual property owner.

Idaho Power has a long history of working collaboratively with property owners to ensure equally satisfactory terms are reached between both parties. Easement compensation, terms and conditions will be negotiated individually with each property owner.